

Summary

Production Name	Granuphilin Rabbit Polyclonal Antibody
Description	Rabbit Polyclonal Antibody
Host	Rabbit
Application	WB
Reactivity	Human,Mouse,Rat

Performance

Conjugation	Unconjugated
Modification	Unmodified
Isotype	IgG
Clonality	Polyclonal
Form	Liquid
Storage	Store at 4°C short term. Aliquot and store at -20°C long term. Avoid freeze/thaw cycles.
Buffer	Liquid in PBS containing 50% glycerol, 0.5% BSA and 0.02% New type preservative N.
Purification	Affinity purification

Immunogen

Gene Name	SYTL4
Alternative Names	SYTL4; Synaptotagmin-like protein 4; Exophilin-2; Granuphilin
Gene ID	94121.0
SwissProt ID	Q96C24.The antiserum was produced against synthesized peptide derived from human SYTL4. AA range:381-430

Application

Dilution Ratio	WB 1:500-1:2000. ELISA: 1:40000.
Molecular Weight	76kD

Background

This gene encodes a member of the synaptotagmin like protein family. Members of this family are characterized by an N-

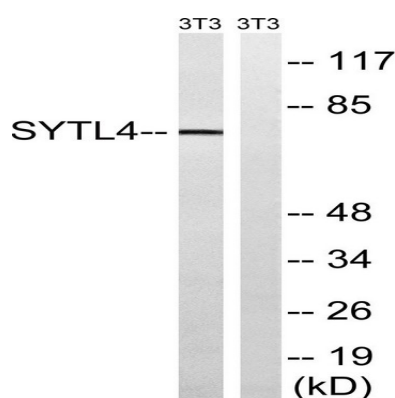
Product Name: Granuphilin Rabbit Polyclonal Antibody
Catalog #: APRab11738



terminal Rab27 binding domain and C-terminal tandem C2 domains. The encoded protein binds specific small Rab GTPases and is involved in intracellular membrane trafficking. This protein binds Rab27 and may be involved in inhibiting dense core vesicle exocytosis. Alternate splicing results in multiple transcript variants that encode the same protein. [provided by RefSeq, Mar 2010],function:Modulates exocytosis of dense-core granules and secretion of hormones in the pancreas and the pituitary. Interacts with vesicles containing negatively charged phospholipids in a Ca(2+)-independent manner.,similarity:Contains 1 FYVE-type zinc finger.,similarity:Contains 1 RabBD (Rab-binding) domain.,similarity:Contains 2 C2 domains.,subcellular location:Detected close to the plasma membrane and on secretory granules. In pancreas, interacts with insulin-containing vesicles.,subunit:Part of a ternary complex containing STX1A and RAB27A. Can bind both dominant negative and dominant active mutants of RAB27A. Binds STXBP1, RAB3A, RAB8A and RAB27B.,

Research Area

Image Data



Western blot analysis of lysates from NIH/3T3 cells, using SYTL4 Antibody. The lane on the right is blocked with the synthesized peptide.

Note

For research use only.