
Summary

Production Name	GPS2 Rabbit Polyclonal Antibody
Description	Rabbit Polyclonal Antibody
Host	Rabbit
Application	WB,ELISA
Reactivity	Human,Mouse,Rat

Performance

Conjugation	Unconjugated
Modification	Unmodified
Isotype	IgG
Clonality	Polyclonal
Form	Liquid
Storage	Store at 4°C short term. Aliquot and store at -20°C long term. Avoid freeze/thaw cycles.
Buffer	Liquid in PBS containing 50% glycerol, 0.5% BSA and 0.02% New type preservative N.
Purification	Affinity purification

Immunogen

Gene Name	GPS2
Alternative Names	GPS2; G protein pathway suppressor 2; GPS-2
Gene ID	2874.0
SwissProt ID	Q13227.The antiserum was produced against synthesized peptide derived from human GPS2. AA range:11-60

Application

Dilution Ratio	WB 1:500 - 1:2000. ELISA: 1:40000.
Molecular Weight	40kD

Background

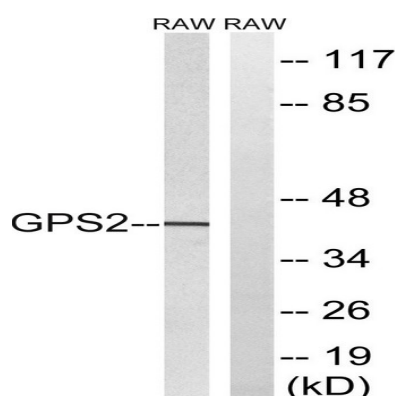
Product Name: GPS2 Rabbit Polyclonal Antibody
Catalog #: APRab11717



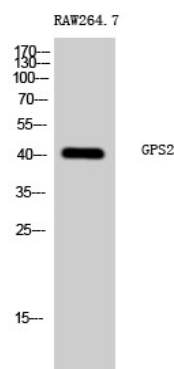
This gene encodes a protein involved in G protein-mitogen-activated protein kinase (MAPK) signaling cascades. When overexpressed in mammalian cells, this gene could potently suppress a RAS- and MAPK-mediated signal and interfere with JNK activity, suggesting that the function of this gene may be signal repression. The encoded protein is an integral subunit of the NCOR1-HDAC3 (nuclear receptor corepressor 1-histone deacetylase 3) complex, and it was shown that the complex inhibits JNK activation through this subunit and thus could potentially provide an alternative mechanism for hormone-mediated antagonism of AP1 (activator protein 1) function. [provided by RefSeq, Jul 2008],function:Suppresses G-protein- and mitogen-activated protein kinase-mediated signal transduction.,sequence caution:Wrong choice of frame.,subunit:Component of the N-Cor repressor complex, at least composed of NCOR1, NCOR2, HDAC3, TBL1X, TBL1R, CORO2A and GPS2.,tissue specificity:Widely expressed.,

Research Area

Image Data



Western blot analysis of lysates from RAW264.7 cells, using GPS2 Antibody. The lane on the right is blocked with the synthesized peptide.



Western Blot analysis of RAW264.7 cells using GPS2 Polyclonal Antibody cells nucleus extracted by Minute TM Cytoplasmic and Nuclear Fractionation kit (SC-003, Inventbiotech, MN, USA) .

Product Name: GPS2 Rabbit Polyclonal Antibody
Catalog #: APRab11717



Note

For research use only.