

Summary

Production Name	GPR92 Rabbit Polyclonal Antibody
Description	Rabbit Polyclonal Antibody
Host	Rabbit
Application	WB,ELISA
Reactivity	Human,Rat,Mouse

Performance

Conjugation	Unconjugated
Modification	Unmodified
Isotype	IgG
Clonality	Polyclonal
Form	Liquid
Storage	Store at 4°C short term. Aliquot and store at -20°C long term. Avoid freeze/thaw cycles.
Buffer	Liquid in PBS containing 50% glycerol, 0.5% BSA and 0.02% New type preservative N.
Purification	Affinity purification

Immunogen

Gene Name	LPAR5
Alternative Names	LPAR5; GPR92; GPR93; Lysophosphatidic acid receptor 5; LPA receptor 5; LPA-5; G-protein coupled receptor 92; G-protein coupled receptor 93
Gene ID	57121.0
SwissProt ID	Q9H1C0.The antiserum was produced against synthesized peptide derived from human GPR92. AA range:241-290

Application

Dilution Ratio	WB 1:500 - 1:2000. ELISA: 1:5000
Molecular Weight	40kD

Product Name: GPR92 Rabbit Polyclonal Antibody
Catalog #: APRab11709



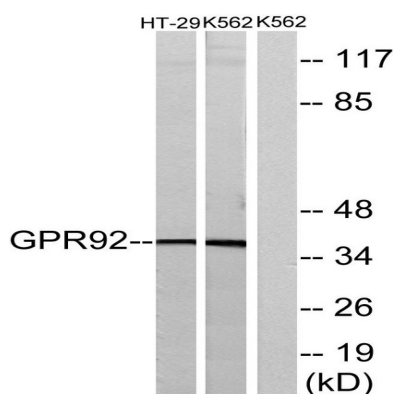
Background

lysophosphatidic acid receptor 5(LPAR5) Homo sapiens This gene encodes a member of the rhodopsin class of G protein-coupled transmembrane receptors. This protein transmits extracellular signals from lysophosphatidic acid to cells through heterotrimeric G proteins and mediates numerous cellular processes. Many G protein receptors serve as targets for pharmaceutical drugs. Transcript variants of this gene have been described.[provided by RefSeq, Dec 2008],function:Receptor for lysophosphatidic acid (LPA), a mediator of diverse cellular activities.,similarity:Belongs to the G-protein coupled receptor 1 family.,tissue specificity:Not expressed in frontal cortex, basal forebrain, caudate putamen, thalamus, or hippocampus.,

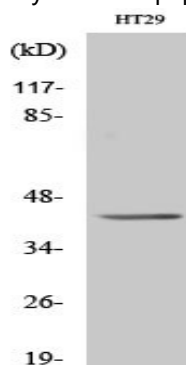
Research Area

PI3K/Akt

Image Data



Western blot analysis of lysates from HT-29 and K562 cells, using GPR92 Antibody. The lane on the right is blocked with the synthesized peptide.



Western Blot analysis of various cells using GPR92 Polyclonal Antibody diluted at 1: 500

Note

For research use only.

Product Name: GPR92 Rabbit Polyclonal Antibody
Catalog #: APRab11709

