

Summary

Production Name	GPR48 Rabbit Polyclonal Antibody
Description	Rabbit Polyclonal Antibody
Host	Rabbit
Application	WB
Reactivity	Human,Rat,Mouse

Performance

Conjugation	Unconjugated
Modification	Unmodified
Isotype	IgG
Clonality	Polyclonal
Form	Liquid
Storage	Store at 4°C short term. Aliquot and store at -20°C long term. Avoid freeze/thaw cycles.
Buffer	Liquid in PBS containing 50% glycerol, 0.5% BSA and 0.02% New type preservative N.
Purification	Affinity purification

Immunogen

Gene Name	LGR4
Alternative Names	LGR4; GPR48; Leucine-rich repeat-containing G-protein coupled receptor 4; G-protein coupled receptor 48
Gene ID	55366.0
SwissProt ID	Q9BXB1.The antiserum was produced against synthesized peptide derived from human LGR4. AA range:461-510

Application

Dilution Ratio	WB 1:500-1:2000. ELISA: 1:5000.
Molecular Weight	100kD

Background

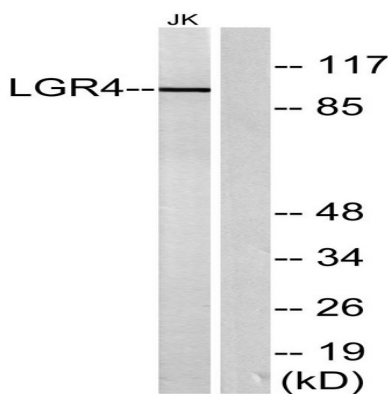
Product Name: GPR48 Rabbit Polyclonal Antibody
Catalog #: APRab11688



The protein encoded by this gene is a G-protein coupled receptor that binds R-spondins and activates the Wnt signaling pathway. This Wnt signaling pathway activation is necessary for proper development of many organs of the body. [provided by RefSeq, Oct 2016],function:Orphan receptor.,similarity:Belongs to the G-protein coupled receptor 1 family.,similarity:Contains 15 LRR (leucine-rich) repeats.,tissue specificity:Expressed in multiple steroidogenic tissues: placenta, ovary, testis and adrenal. Expressed also in spinal cord, thyroid, stomach, trachea, heart, pancreas, kidney, prostate and spleen.,

Research Area

Image Data



Western blot analysis of lysates from Jurkat cells, using LGR4 Antibody. The lane on the right is blocked with the synthesized peptide.

Note

For research use only.