

Product Name: GPR45 Rabbit Polyclonal Antibody
Catalog #: APRab11687



Summary

Production Name	GPR45 Rabbit Polyclonal Antibody
Description	Rabbit Polyclonal Antibody
Host	Rabbit
Application	WB
Reactivity	Human,Mouse

Performance

Conjugation	Unconjugated
Modification	Unmodified
Isotype	IgG
Clonality	Polyclonal
Form	Liquid
Storage	Store at 4°C short term. Aliquot and store at -20°C long term. Avoid freeze/thaw cycles.
Buffer	Liquid in PBS containing 50% glycerol, and 0.02% New type preservative N.
Purification	Affinity purification

Immunogen

Gene Name	GPR45
Alternative Names	
Gene ID	11250.0
SwissProt ID	Q9Y5Y3.Synthesized peptide derived from human protein . at AA range: 110-190

Application

Dilution Ratio	WB 1:500-2000 ELISA 1:5000-20000
Molecular Weight	40kD

Background

This intronless gene encodes a member of the G protein-coupled receptor (GPCR) family. Members of this protein family contain seven putative transmembrane domains and may mediate signaling processes to the interior of the cell via

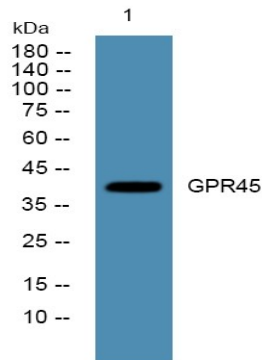
Product Name: GPR45 Rabbit Polyclonal Antibody
Catalog #: APRab11687



activation of heterotrimeric G proteins. This protein may function in the central nervous system. [provided by RefSeq, Jul 2008],function:Orphan receptor. May play a role in brain function.,similarity:Belongs to the G-protein coupled receptor 1 family.,tissue specificity:Expressed in brain; detected in the basal forebrain, frontal cortex, and caudate, but not in thalamus, hippocampus, or putamen.,

Research Area

Image Data



Western blot analysis of lysates from Jarkat cells, primary antibody was diluted at 1:1000, 4°over night

Note

For research use only.