
Summary

Production Name	GPR40 Rabbit Polyclonal Antibody
Description	Rabbit Polyclonal Antibody
Host	Rabbit
Application	IF, WB,
Reactivity	Human, Monkey

Performance

Conjugation	Unconjugated
Modification	Unmodified
Isotype	IgG
Clonality	Polyclonal
Form	Liquid
Storage	Store at 4°C short term. Aliquot and store at -20°C long term. Avoid freeze/thaw cycles.
Buffer	Liquid in PBS containing 50% glycerol, 0.5% BSA and 0.02% New type preservative N.
Purification	Affinity purification

Immunogen

Gene Name	FFAR1
Alternative Names	FFAR1; GPR40; Free fatty acid receptor 1; G-protein coupled receptor 40
Gene ID	2864.0
SwissProt ID	O14842. The antiserum was produced against synthesized peptide derived from human FFAR1. AA range: 185-234

Application

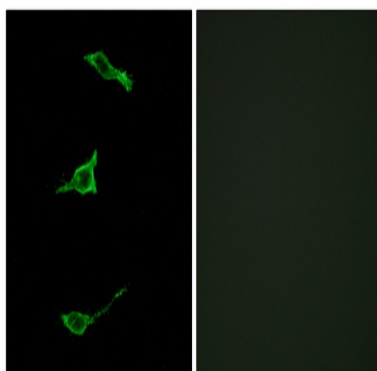
Dilution Ratio	WB 1:500 - 1:2000. IF 1:200 - 1:1000. ELISA: 1:10000. Not yet tested in other applications.
Molecular Weight	26kD

Background

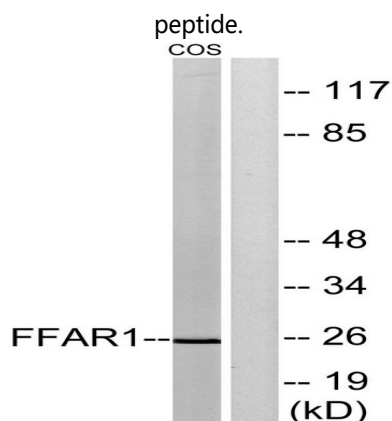
This gene encodes a member of the GP40 family of G protein-coupled receptors that are clustered together on chromosome 19. The encoded protein is a receptor for medium and long chain free fatty acids and may be involved in the metabolic regulation of insulin secretion. Polymorphisms in this gene may be associated with type 2 diabetes. [provided by RefSeq, Apr 2009],function:Receptor for medium and long chain saturated and unsaturated fatty acids. Binding of the ligand increase intracellular calcium concentration and amplify glucose-stimulated insulin secretion. The activity of this receptor is mediated by G-proteins that activate phospholipase C. Seems to act through a G(q) and G(i)-mediated pathway.,similarity:Belongs to the G-protein coupled receptor 1 family.,tissue specificity:Expressed abundantly in pancreatic beta cells,

Research Area

Image Data

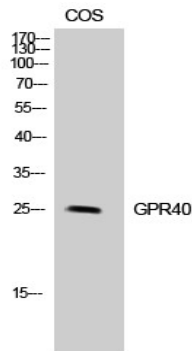


Immunofluorescence analysis of LOVO cells, using FFAR1 Antibody. The picture on the right is blocked with the synthesized

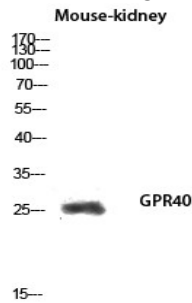


Western blot analysis of lysates from COS7 cells, treated with forskolin 40nM 30', using FFAR1 Antibody. The lane on the right is blocked with the synthesized peptide.

Product Name: GPR40 Rabbit Polyclonal Antibody
Catalog #: APRab11683



Western Blot analysis of COS-7 cells using GPR40 Polyclonal Antibody diluted at 1:500



Western blot analysis of Mouse-kidney lysis using GPR40 antibody. Antibody was diluted at 1:500

Note

For research use only.