

Product Name: GPR4 Rabbit Polyclonal Antibody
Catalog #: APRab11682



Summary

Production Name	GPR4 Rabbit Polyclonal Antibody
Description	Rabbit Polyclonal Antibody
Host	Rabbit
Application	WB
Reactivity	Human,Mouse,Rat

Performance

Conjugation	Unconjugated
Modification	Unmodified
Isotype	IgG
Clonality	Polyclonal
Form	Liquid
Storage	Store at 4°C short term. Aliquot and store at -20°C long term. Avoid freeze/thaw cycles.
Buffer	Liquid in PBS containing 50% glycerol, and 0.02% New type preservative N.
Purification	Affinity purification

Immunogen

Gene Name	GPR4 GPR19
Alternative Names	
Gene ID	2828.0
SwissProt ID	P46093.Synthesized peptide derived from human protein . at AA range: 160-240

Application

Dilution Ratio	WB 1:500-2000 ELISA 1:5000-20000
Molecular Weight	39kD

Background

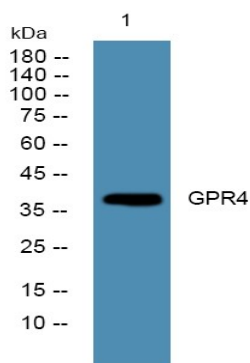
function:Orphan receptor.,similarity:Belongs to the G-protein coupled receptor 1 family.,function:Orphan receptor.,similarity:Belongs to the G-protein coupled receptor 1 family.,

Product Name: GPR4 Rabbit Polyclonal Antibody
Catalog #: APRab11682



Research Area

Image Data



Western blot analysis of lysates from A431 cells, primary antibody was diluted at 1:1000, 4° over night

Note

For research use only.