

Summary

Production Name	GPR38 Rabbit Polyclonal Antibody
Description	Rabbit Polyclonal Antibody
Host	Rabbit
Application	WB
Reactivity	Human,Rat,Mouse

Performance

Conjugation	Unconjugated
Modification	Unmodified
Isotype	IgG
Clonality	Polyclonal
Form	Liquid
Storage	Store at 4°C short term. Aliquot and store at -20°C long term. Avoid freeze/thaw cycles.
Buffer	Liquid in PBS containing 50% glycerol, 0.5% BSA and 0.02% New type preservative N.
Purification	Affinity purification

Immunogen

Gene Name	MLNR
Alternative Names	MLNR; GPR38; MTLR; MTLR1; Motilin receptor; G-protein coupled receptor 38
Gene ID	2862.0
SwissProt ID	O43193.Synthesized peptide derived from the C-terminal region of human GPR38.

Application

Dilution Ratio	WB 1:500-1:2000. ELISA: 1:20000.
Molecular Weight	45kD

Background

Motilin is a 22 amino acid peptide hormone expressed throughout the gastrointestinal (GI) tract. The protein encoded by this gene is a motilin receptor which is a member of the G-protein coupled receptor 1 family. This member is a multi-pass

Product Name: GPR38 Rabbit Polyclonal Antibody
Catalog #: APRab11680

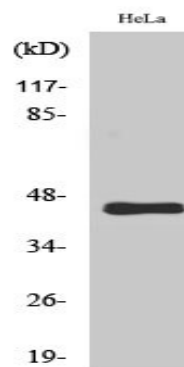


transmembrane protein, and is an important therapeutic target for the treatment of hypomotility disorders. [provided by RefSeq, Aug 2011],function:Receptor for motilin.,similarity:Belongs to the G-protein coupled receptor 1 family.,tissue specificity:Expressed only in thyroid, stomach, and bone marrow.,

Research Area

Neuroactive ligand-receptor interaction;

Image Data



Western Blot analysis of various cells using GPR38 Polyclonal Antibody

Note

For research use only.