

---

## Summary

<b>Production Name</b>	GPR35 Rabbit Polyclonal Antibody
<b>Description</b>	Rabbit Polyclonal Antibody
<b>Host</b>	Rabbit
<b>Application</b>	WB,IF,ELISA
<b>Reactivity</b>	Human,Rat,Mouse

## Performance

<b>Conjugation</b>	Unconjugated
<b>Modification</b>	Unmodified
<b>Isotype</b>	IgG
<b>Clonality</b>	Polyclonal
<b>Form</b>	Liquid
<b>Storage</b>	Store at 4°C short term. Aliquot and store at -20°C long term. Avoid freeze/thaw cycles.
<b>Buffer</b>	Liquid in PBS containing 50% glycerol, 0.5% BSA and 0.02% New type preservative N.
<b>Purification</b>	Affinity purification

## Immunogen

<b>Gene Name</b>	GPR35
<b>Alternative Names</b>	GPR35; G-protein coupled receptor 35; Kynurenic acid receptor; KYNA receptor
<b>Gene ID</b>	2859.0
<b>SwissProt ID</b>	Q9HC97.The antiserum was produced against synthesized peptide derived from human GPR35. AA range:51-100

## Application

<b>Dilution Ratio</b>	WB 1:500 - 1:2000. IF 1:200 - 1:1000. ELISA: 1:20000. Not yet tested in other applications.
<b>Molecular Weight</b>	34kD

**Product Name: GPR35 Rabbit Polyclonal Antibody**  
**Catalog #: APRab11677**



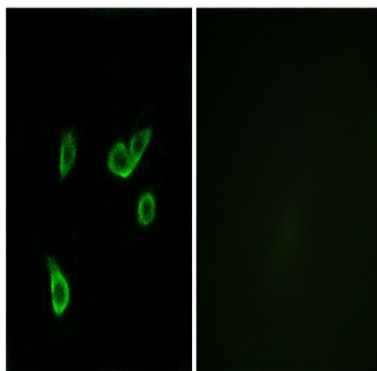
## Background

function:Orphan receptor.,similarity:Belongs to the G-protein coupled receptor 1 family.,tissue specificity:Expressed in all adult and fetal tissues examined, including pancreatic islets and skeletal muscle, with relatively higher levels in adult lung, small intestine, colon and stomach.,function:Orphan receptor.,similarity:Belongs to the G-protein coupled receptor 1 family.,tissue specificity:Expressed in all adult and fetal tissues examined, including pancreatic islets and skeletal muscle, with relatively higher levels in adult lung, small intestine, colon and stomach.,

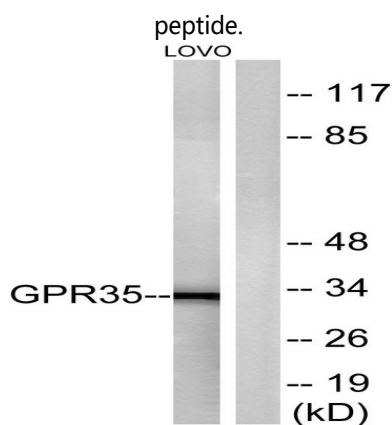
## Research Area

Neuroactive ligand-receptor interaction;

## Image Data



Immunofluorescence analysis of A549 cells, using GPR35 Antibody. The picture on the right is blocked with the synthesized



Western blot analysis of lysates from LOVO cells, using GPR35 Antibody. The lane on the right is blocked with the synthesized peptide.

## Note

For research use only.