

---

## Summary

<b>Production Name</b>	GPR34 Rabbit Polyclonal Antibody
<b>Description</b>	Rabbit Polyclonal Antibody
<b>Host</b>	Rabbit
<b>Application</b>	IF, WB, ELISA
<b>Reactivity</b>	Human, Mouse, Rat, Monkey

## Performance

<b>Conjugation</b>	Unconjugated
<b>Modification</b>	Unmodified
<b>Isotype</b>	IgG
<b>Clonality</b>	Polyclonal
<b>Form</b>	Liquid
<b>Storage</b>	Store at 4°C short term. Aliquot and store at -20°C long term. Avoid freeze/thaw cycles.
<b>Buffer</b>	Liquid in PBS containing 50% glycerol, 0.5% BSA and 0.02% New type preservative N.
<b>Purification</b>	Affinity purification

## Immunogen

<b>Gene Name</b>	GPR34
<b>Alternative Names</b>	GPR34; Probable G-protein coupled receptor 34
<b>Gene ID</b>	2857.0
<b>SwissProt ID</b>	Q9UPC5. The antiserum was produced against synthesized peptide derived from human GPR34. AA range: 181-230

## Application

<b>Dilution Ratio</b>	WB 1:500 - 1:2000. IF 1:200 - 1:1000. ELISA: 1:10000. Not yet tested in other applications.
<b>Molecular Weight</b>	44kD

**Product Name: GPR34 Rabbit Polyclonal Antibody**  
**Catalog #: APRab11676**

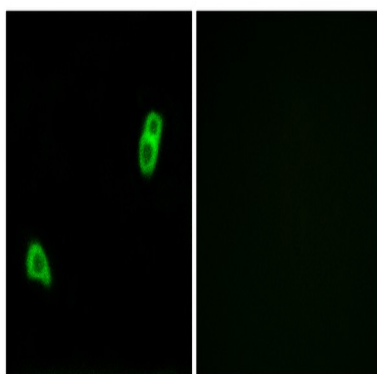


## Background

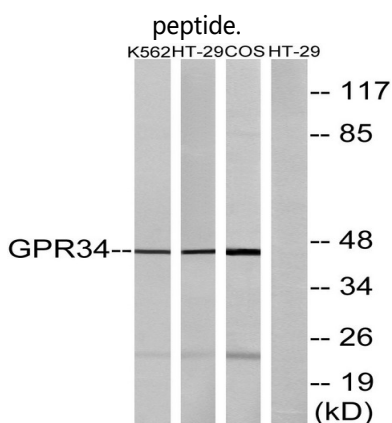
G protein-coupled receptors (GPCRs), such as GPR34, are integral membrane proteins containing 7 putative transmembrane domains (TMs). These proteins mediate signals to the interior of the cell via activation of heterotrimeric G proteins that in turn activate various effector proteins, ultimately resulting in a physiologic response.[supplied by OMIM, Apr 2006],function:Orphan receptor.,similarity:Belongs to the G-protein coupled receptor 1 family.,tissue specificity:Broadly expressed.,

## Research Area

## Image Data

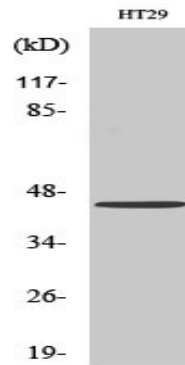


Immunofluorescence analysis of LOVO cells, using GPR34 Antibody. The picture on the right is blocked with the synthesized



Western blot analysis of lysates from HT-29, K562, and COS7 cells, using GPR34 Antibody. The lane on the right is blocked with the synthesized peptide.

**Product Name: GPR34 Rabbit Polyclonal Antibody**  
**Catalog #: APRab11676**



Western Blot analysis of various cells using GPR34 Polyclonal Antibody

**Note**

For research use only.