
Summary

| | |
|------------------------|----------------------------------|
| Production Name | GPR27 Rabbit Polyclonal Antibody |
| Description | Rabbit Polyclonal Antibody |
| Host | Rabbit |
| Application | IF, WB, ELISA |
| Reactivity | Human, Mouse, Rat |

Performance

| | |
|---------------------|------------------------------------------------------------------------------------------|
| Conjugation | Unconjugated |
| Modification | Unmodified |
| Isotype | IgG |
| Clonality | Polyclonal |
| Form | Liquid |
| Storage | Store at 4°C short term. Aliquot and store at -20°C long term. Avoid freeze/thaw cycles. |
| Buffer | Liquid in PBS containing 50% glycerol, 0.5% BSA and 0.02% New type preservative N. |
| Purification | Affinity purification |

Immunogen

| | |
|--------------------------|------------------------------------------------------------------------------------------------------------|
| Gene Name | GPR27 |
| Alternative Names | GPR27; SREB1; Probable G-protein coupled receptor 27; Super conserved receptor expressed in brain 1 |
| Gene ID | 2850.0 |
| SwissProt ID | Q9NS67. The antiserum was produced against synthesized peptide derived from human GPR27. AA range: 181-230 |

Application

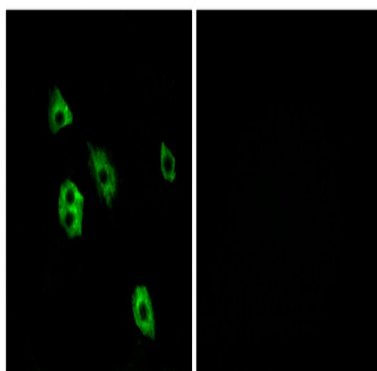
| | |
|-------------------------|---------------------------------------------------------------------------------------------|
| Dilution Ratio | WB 1:500 - 1:2000. IF 1:200 - 1:1000. ELISA: 1:10000. Not yet tested in other applications. |
| Molecular Weight | 39kD |

Background

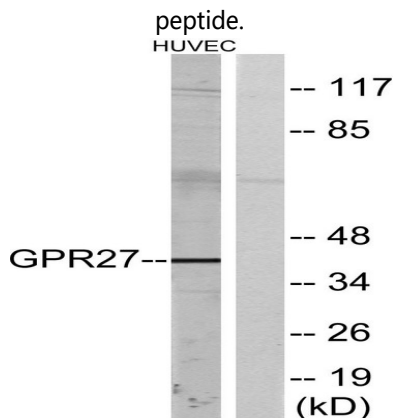
GPR27 is a member of the G protein-coupled receptors (GPCRs), a large family of receptors that have a similar structure characterized by 7 transmembrane domains. Activation of GPCRs by extracellular stimuli such as neurotransmitters, hormones, or light induces an intracellular signaling cascade mediated by heterotrimeric GTP-binding proteins, or G proteins.[supplied by OMIM, May 2010],function:Orphan receptor. Possible candidate for amine-like G-protein coupled receptor.,similarity:Belongs to the G-protein coupled receptor 1 family.,tissue specificity:Highly expressed as a 3.0 kb transcript in brain, ovary, testis, heart, prostate and peripheral Leukocytes. Lower levels in pancreas and small intestine. A 2.3 kb transcript was also found in peripheral Leukocytes. In brain regions, detected as a 3.0 kb transcript in all regions tested. Highest levels in the caudate nucleus, putamen, hippocampus and subthalamic nucleus. Lowest level in the cerebellum.,

Research Area

Image Data

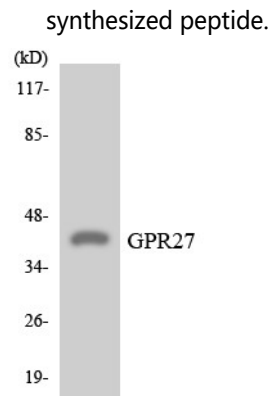


Immunofluorescence analysis of A549 cells, using GPR27 Antibody. The picture on the right is blocked with the synthesized



Western blot analysis of lysates from HUVEC cells, using GPR27 Antibody. The lane on the right is blocked with the

Product Name: GPR27 Rabbit Polyclonal Antibody
Catalog #: APRab11671



Western blot analysis of the lysates from HeLa cells using GPR27 antibody.

Note

For research use only.