

**Product Name: GPR180 Rabbit Polyclonal Antibody**  
**Catalog #: APRab11664**



## Summary

<b>Production Name</b>	GPR180 Rabbit Polyclonal Antibody
<b>Description</b>	Rabbit Polyclonal Antibody
<b>Host</b>	Rabbit
<b>Application</b>	IF,IHC,WB,
<b>Reactivity</b>	Human,Mouse

## Performance

<b>Conjugation</b>	Unconjugated
<b>Modification</b>	Unmodified
<b>Isotype</b>	IgG
<b>Clonality</b>	Polyclonal
<b>Form</b>	Liquid
<b>Storage</b>	Store at 4°C short term. Aliquot and store at -20°C long term. Avoid freeze/thaw cycles.
<b>Buffer</b>	Liquid in PBS containing 50% glycerol, 0.5% BSA and 0.02% New type preservative N.
<b>Purification</b>	Affinity purification

## Immunogen

<b>Gene Name</b>	GPR180
<b>Alternative Names</b>	GPR180; ITR; Integral membrane protein GPR180; Intimal thickness-related receptor
<b>Gene ID</b>	160897.0
<b>SwissProt ID</b>	Q86V85.The antiserum was produced against synthesized peptide derived from human GPR180. AA range:241-290

## Application

<b>Dilution Ratio</b>	WB 1:500 - 1:2000 IHC 1:100 - 1:300. IF 1:200 - 1:1000. ELISA: 1:10000. Not yet tested in other applications.
<b>Molecular Weight</b>	50kD

**Product Name: GPR180 Rabbit Polyclonal Antibody**  
**Catalog #: APRab11664**

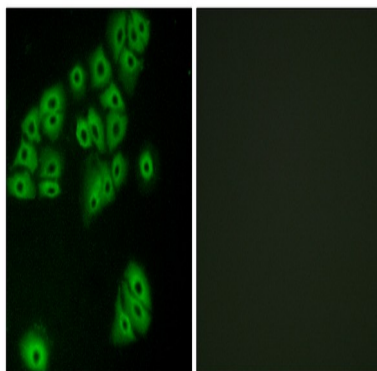


## Background

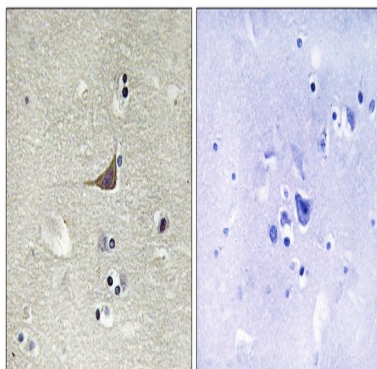
This gene encodes a protein that is a member of the G protein-coupled receptor superfamily. This protein is produced predominantly in vascular smooth muscle cells and may play an important role in the regulation of vascular remodeling. [provided by RefSeq, Jul 2008],

## Research Area

## Image Data

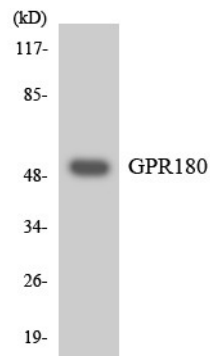


Immunofluorescence analysis of A549 cells, using GPR180 Antibody. The picture on the right is blocked with the synthesized peptide.

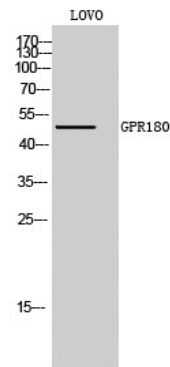


Immunohistochemistry analysis of paraffin-embedded human brain tissue, using GPR180 Antibody. The picture on the right is blocked with the synthesized peptide.

**Product Name: GPR180 Rabbit Polyclonal Antibody**  
**Catalog #: APRab11664**



Western blot analysis of the lysates from Jurkat cells using GPR180 antibody.



Western Blot analysis of LOVO cells using GPR180 Polyclonal Antibody

**Note**

For research use only.