
Summary

Production Name	GPR173 Rabbit Polyclonal Antibody
Description	Rabbit Polyclonal Antibody
Host	Rabbit
Application	WB,
Reactivity	Human,Mouse,Rat

Performance

Conjugation	Unconjugated
Modification	Unmodified
Isotype	IgG
Clonality	Polyclonal
Form	Liquid
Storage	Store at 4°C short term. Aliquot and store at -20°C long term. Avoid freeze/thaw cycles.
Buffer	Liquid in PBS containing 50% glycerol, 0.5% BSA and 0.02% New type preservative N.
Purification	Affinity purification

Immunogen

Gene Name	GPR173
Alternative Names	GPR173; SREB3; Probable G-protein coupled receptor 173; Super conserved receptor expressed in brain 3
Gene ID	54328.0
SwissProt ID	Q9NS66.The antiserum was produced against synthesized peptide derived from human GPR173. AA range:251-300

Application

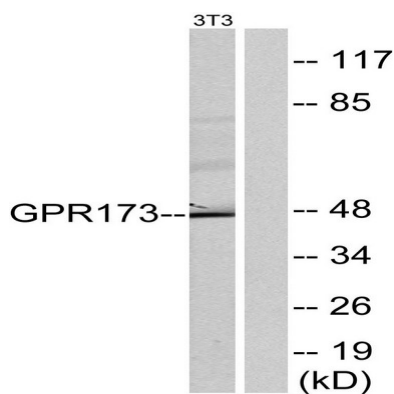
Dilution Ratio	WB 1:500 - 1:2000. ELISA: 1:10000. Not yet tested in other applications.
Molecular Weight	47kD

Background

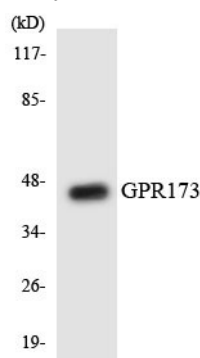
This gene encodes a member of the G-protein coupled receptor 1 family. This protein contains 7 transmembrane domains and conserved cysteine residues. [provided by RefSeq, Nov 2009],function:Orphan receptor.,similarity:Belongs to the G-protein coupled receptor 1 family.,tissue specificity:Expressed at high levels in brain and ovary. Lower levels in small intestine. In brain regions, detected in all regions tested. Highest levels in the cerebellum and cerebral cortex.,

Research Area

Image Data

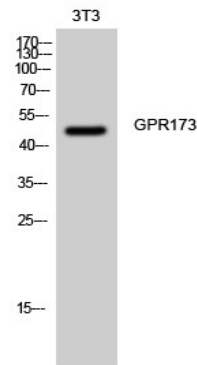


Western blot analysis of lysates from NIH/3T3 cells, using GPR173 Antibody. The lane on the right is blocked with the synthesized peptide.

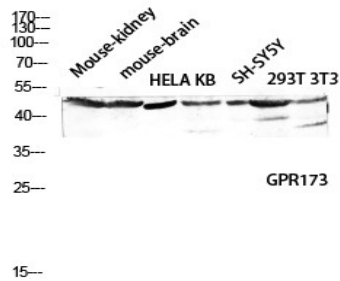


Western blot analysis of the lysates from COLO205 cells using GPR173 antibody.

Product Name: GPR173 Rabbit Polyclonal Antibody
Catalog #: APRab11659



Western Blot analysis of 3T3 cells using GPR173 Polyclonal Antibody diluted at 1: 2000



Western blot analysis of Mouse-kidney mouse-brain HELA KB SH-SY5Y 293T 3T3 lysis using GPR173 antibody. Antibody was diluted at 1:2000

Note

For research use only.