
Summary

Production Name	GPR171 Rabbit Polyclonal Antibody
Description	Rabbit Polyclonal Antibody
Host	Rabbit
Application	WB,ELISA
Reactivity	Human,Rat,Mouse

Performance

Conjugation	Unconjugated
Modification	Unmodified
Isotype	IgG
Clonality	Polyclonal
Form	Liquid
Storage	Store at 4°C short term. Aliquot and store at -20°C long term. Avoid freeze/thaw cycles.
Buffer	Liquid in PBS containing 50% glycerol, 0.5% BSA and 0.02% New type preservative N.
Purification	Affinity purification

Immunogen

Gene Name	GPR171
Alternative Names	GPR171; H963; Probable G-protein coupled receptor 171; G-protein coupled receptor H963
Gene ID	29909.0
SwissProt ID	O14626.The antiserum was produced against synthesized peptide derived from human GPR171. AA range:181-230

Application

Dilution Ratio	WB 1:500 - 1:2000. ELISA: 1:10000
Molecular Weight	36kD

Product Name: GPR171 Rabbit Polyclonal Antibody
Catalog #: APRab11656

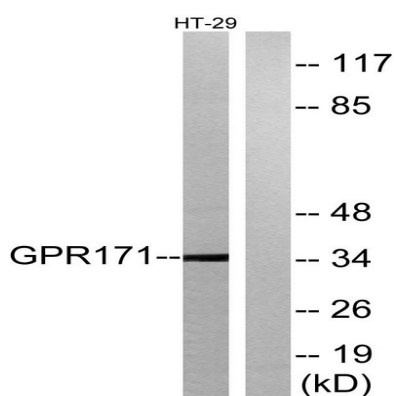


Background

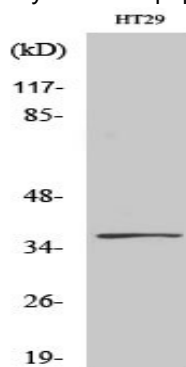
function:Orphan receptor.,similarity:Belongs to the G-protein coupled receptor 1 family.,function:Orphan receptor.,similarity:Belongs to the G-protein coupled receptor 1 family.,

Research Area

Image Data



Western blot analysis of lysates from HT-29 cells, using GPR171 Antibody. The lane on the right is blocked with the synthesized peptide.



Western Blot analysis of various cells using GPR171 Polyclonal Antibody

Note

For research use only.