

---

## Summary

<b>Production Name</b>	GPR151 Rabbit Polyclonal Antibody
<b>Description</b>	Rabbit Polyclonal Antibody
<b>Host</b>	Rabbit
<b>Application</b>	IF, WB, ELISA
<b>Reactivity</b>	Human, Mouse, Rat

## Performance

<b>Conjugation</b>	Unconjugated
<b>Modification</b>	Unmodified
<b>Isotype</b>	IgG
<b>Clonality</b>	Polyclonal
<b>Form</b>	Liquid
<b>Storage</b>	Store at 4°C short term. Aliquot and store at -20°C long term. Avoid freeze/thaw cycles.
<b>Buffer</b>	Liquid in PBS containing 50% glycerol, 0.5% BSA and 0.02% New type preservative N.
<b>Purification</b>	Affinity purification

## Immunogen

<b>Gene Name</b>	GPR151
<b>Alternative Names</b>	GPR151; PGR7; Probable G-protein coupled receptor 151; G-protein coupled receptor PGR7; GPCR-2037
<b>Gene ID</b>	134391.0
<b>SwissProt ID</b>	Q8TDV0. The antiserum was produced against synthesized peptide derived from human GPR151. AA range: 370-419

## Application

<b>Dilution Ratio</b>	WB 1:500 - 1:2000. IF 1:200 - 1:1000. ELISA: 1:5000. Not yet tested in other applications.
<b>Molecular Weight</b>	46kD

**Product Name: GPR151 Rabbit Polyclonal Antibody**  
**Catalog #: APRab11648**

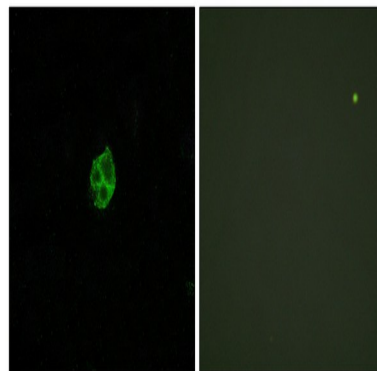


## Background

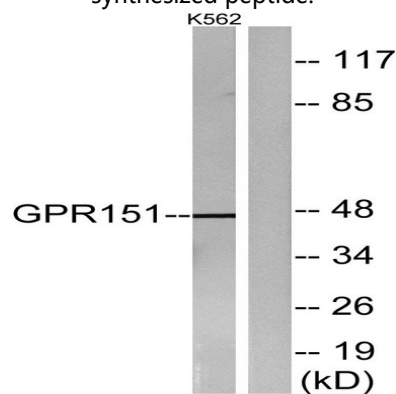
function:Orphan receptor.,similarity:Belongs to the G-protein coupled receptor 1 family.,function:Orphan receptor.,similarity:Belongs to the G-protein coupled receptor 1 family.,

## Research Area

## Image Data

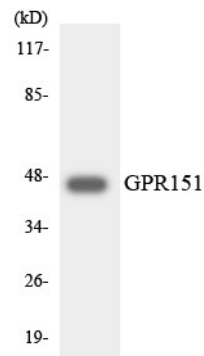


Immunofluorescence analysis of HUVEC cells, using GPR151 Antibody. The picture on the right is blocked with the synthesized peptide.



Western blot analysis of lysates from K562 cells, using GPR151 Antibody. The lane on the right is blocked with the synthesized peptide.

**Product Name: GPR151 Rabbit Polyclonal Antibody**  
**Catalog #: APRab11648**



Western blot analysis of the lysates from HeLa cells using GPR151 antibody.

**Note**

For research use only.