
Summary

Production Name	GPR150 Rabbit Polyclonal Antibody
Description	Rabbit Polyclonal Antibody
Host	Rabbit
Application	WB,IF,ELISA
Reactivity	Human,Rat,Mouse

Performance

Conjugation	Unconjugated
Modification	Unmodified
Isotype	IgG
Clonality	Polyclonal
Form	Liquid
Storage	Store at 4°C short term. Aliquot and store at -20°C long term. Avoid freeze/thaw cycles.
Buffer	Liquid in PBS containing 50% glycerol, 0.5% BSA and 0.02% New type preservative N.
Purification	Affinity purification

Immunogen

Gene Name	GPR150
Alternative Names	GPR150; Probable G-protein coupled receptor 150
Gene ID	285601.0
SwissProt ID	Q8NGU9.The antiserum was produced against synthesized peptide derived from human GPR150. AA range:361-410

Application

Dilution Ratio	WB 1:500 - 1:2000. IF 1:200 - 1:1000. ELISA: 1:10000. Not yet tested in other applications.
Molecular Weight	46kD

Product Name: GPR150 Rabbit Polyclonal Antibody
Catalog #: APRab11647

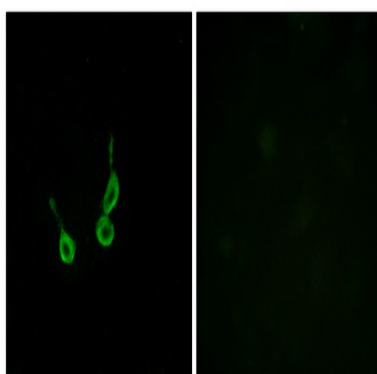


Background

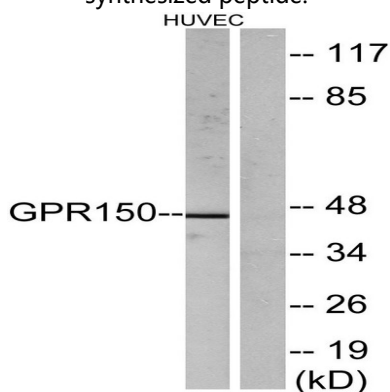
function:Orphan receptor.,similarity:Belongs to the G-protein coupled receptor 1 family.,function:Orphan receptor.,similarity:Belongs to the G-protein coupled receptor 1 family.,

Research Area

Image Data



Immunofluorescence analysis of HepG2 cells, using GPR150 Antibody. The picture on the right is blocked with the synthesized peptide.



Western blot analysis of lysates from HUVEC cells, using GPR150 Antibody. The lane on the right is blocked with the synthesized peptide.

Note

For research use only.