

Product Name: GPR15 Rabbit Polyclonal Antibody
Catalog #: APRab11646



Summary

Production Name	GPR15 Rabbit Polyclonal Antibody
Description	Rabbit Polyclonal Antibody
Host	Rabbit
Application	IF, WB,
Reactivity	Human, Mouse

Performance

Conjugation	Unconjugated
Modification	Unmodified
Isotype	IgG
Clonality	Polyclonal
Form	Liquid
Storage	Store at 4°C short term. Aliquot and store at -20°C long term. Avoid freeze/thaw cycles.
Buffer	Liquid in PBS containing 50% glycerol, 0.5% BSA and 0.02% New type preservative N.
Purification	Affinity purification

Immunogen

Gene Name	GPR15
Alternative Names	GPR15; G-protein coupled receptor 15; Brother of Bonzo; BoB
Gene ID	2838.0
SwissProt ID	P49685. The antiserum was produced against synthesized peptide derived from human GPR15. AA range: 201-250

Application

Dilution Ratio	WB 1:500 - 1:2000. IF 1:200 - 1:1000. ELISA: 1:10000. Not yet tested in other applications.
Molecular Weight	40kD

Product Name: GPR15 Rabbit Polyclonal Antibody
Catalog #: APRab11646

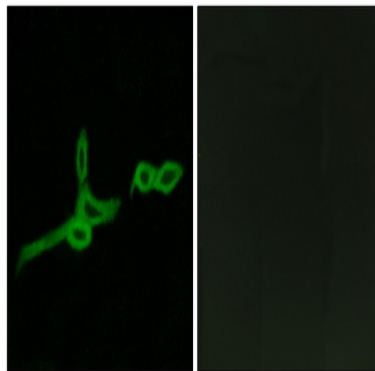


Background

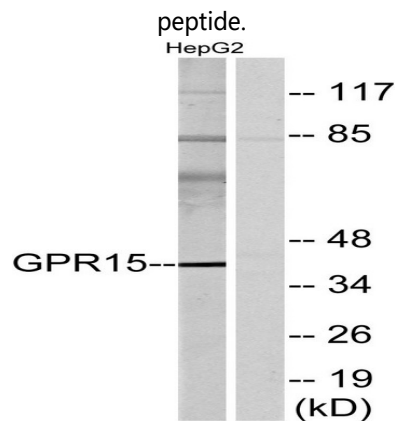
This gene encodes a G protein-coupled receptor that acts as a chemokine receptor for human immunodeficiency virus type 1 and 2. The encoded protein localizes to the cell membrane. [provided by RefSeq, Nov 2012],function:Probable chemokine receptor. Alternative coreceptor with CD4 for HIV-1 infection.,similarity:Belongs to the G-protein coupled receptor 1 family.,

Research Area

Image Data

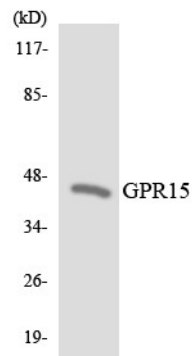


Immunofluorescence analysis of LOVO cells, using GPR15 Antibody. The picture on the right is blocked with the synthesized

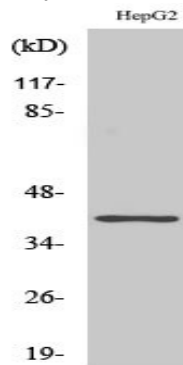


Western blot analysis of lysates from HepG2 cells, using GPR15 Antibody. The lane on the right is blocked with the synthesized peptide.

Product Name: GPR15 Rabbit Polyclonal Antibody
Catalog #: APRab11646



Western blot analysis of the lysates from HeLa cells using GPR15 antibody.



Western Blot analysis of various cells using GPR15 Polyclonal Antibody

Note

For research use only.