

## Summary

|                        |                                   |
|------------------------|-----------------------------------|
| <b>Production Name</b> | GPR144 Rabbit Polyclonal Antibody |
| <b>Description</b>     | Rabbit Polyclonal Antibody        |
| <b>Host</b>            | Rabbit                            |
| <b>Application</b>     | WB                                |
| <b>Reactivity</b>      | Human,Rat,Mouse                   |

## Performance

|                     |  |
|---------------------|--|
| <b>Conjugation</b>  | Unconjugated   |
| <b>Modification</b> | Unmodified   |
| <b>Isotype</b>      | IgG  |
| <b>Clonality</b>    | Polyclonal   |
| <b>Form</b>         | Liquid   |
| <b>Storage</b>      | Store at 4°C short term. Aliquot and store at -20°C long term. Avoid freeze/thaw cycles. |
| <b>Buffer</b>       | Liquid in PBS containing 50% glycerol, 0.5% BSA and 0.02% New type preservative N.       |
| <b>Purification</b> | Affinity purification  |

## Immunogen

|                          |  |
|--------------------------|--|
| <b>Gene Name</b>         | GPR144   |
| <b>Alternative Names</b> | GPR144; PGR24; Probable G-protein coupled receptor 144; G-protein coupled receptor PGR24                 |
| <b>Gene ID</b>           | 347088.0   |
| <b>SwissProt ID</b>      | Q7Z7M1.The antiserum was produced against synthesized peptide derived from human GPR144. AA range:91-140 |

## Application

|                         |                                 |
|-------------------------|---------------------------------|
| <b>Dilution Ratio</b>   | WB 1:500-1:2000. ELISA: 1:5000. |
| <b>Molecular Weight</b> | 104kD                           |

## Background

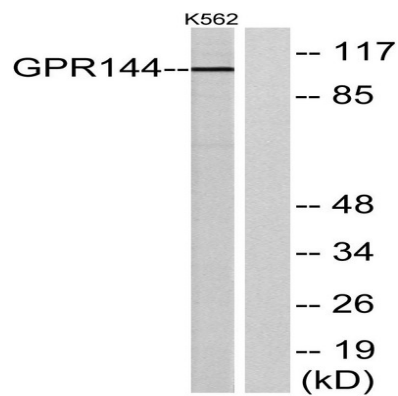
**Product Name: GPR144 Rabbit Polyclonal Antibody**  
**Catalog #: APRab11643**



function:Orphan receptor.,similarity:Belongs to the G-protein coupled receptor 2 family. LN-TM7 subfamily.,similarity:Contains 1 GPS domain.,similarity:Contains 1 pentaxin domain.,function:Orphan receptor.,similarity:Belongs to the G-protein coupled receptor 2 family. LN-TM7 subfamily.,similarity:Contains 1 GPS domain.,similarity:Contains 1 pentaxin domain.,

## Research Area

## Image Data



Western blot analysis of lysates from K562 cells, using GPR144 Antibody. The lane on the right is blocked with the synthesized peptide.

## Note

For research use only.