

## Summary

<b>Production Name</b>	GPR137C Rabbit Polyclonal Antibody
<b>Description</b>	Rabbit Polyclonal Antibody
<b>Host</b>	Rabbit
<b>Application</b>	IF,IHC,WB,
<b>Reactivity</b>	Human,Rat,Mouse

## Performance

<b>Conjugation</b>	Unconjugated
<b>Modification</b>	Unmodified
<b>Isotype</b>	IgG
<b>Clonality</b>	Polyclonal
<b>Form</b>	Liquid
<b>Storage</b>	Store at 4°C short term. Aliquot and store at -20°C long term. Avoid freeze/thaw cycles.
<b>Buffer</b>	Liquid in PBS containing 50% glycerol, 0.5% BSA and 0.02% New type preservative N.
<b>Purification</b>	Affinity purification

## Immunogen

<b>Gene Name</b>	GPR137C
<b>Alternative Names</b>	GPR137C; TM7SF1L2; Integral membrane protein GPR137C; Transmembrane 7 superfamily member 1-like 2 protein
<b>Gene ID</b>	283554.0
<b>SwissProt ID</b>	Q8N3F9.The antiserum was produced against synthesized peptide derived from human GPR137C. AA range:256-305

## Application

<b>Dilution Ratio</b>	WB 1:500 - 1:2000 IHC 1:100 - 1:300. IF 1:200 - 1:1000. ELISA: 1:10000. Not yet tested in other applications.
<b>Molecular Weight</b>	45kD

**Product Name: GPR137C Rabbit Polyclonal Antibody**  
**Catalog #: APRab11639**

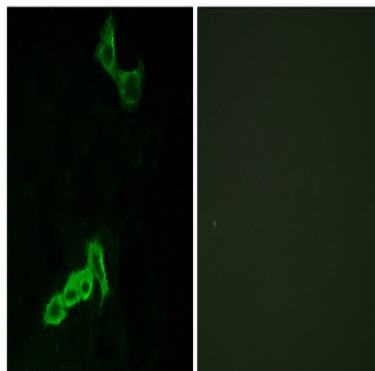


## Background

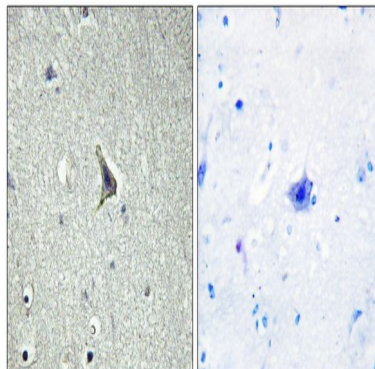
similarity:Belongs to the GPR137 family.,similarity:Belongs to the GPR137 family.,

## Research Area

## Image Data

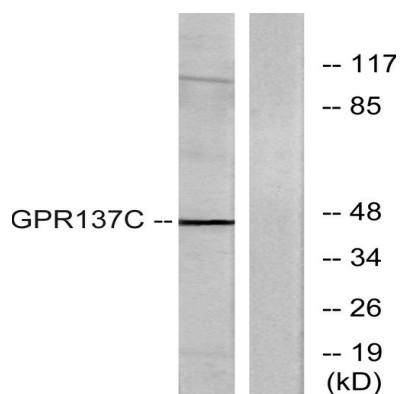


Immunofluorescence analysis of MCF7 cells, using GPR137C Antibody. The picture on the right is blocked with the synthesized peptide.

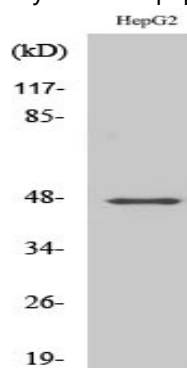


Immunohistochemistry analysis of paraffin-embedded human brain tissue, using GPR137C Antibody. The picture on the right is blocked with the synthesized peptide.

**Product Name: GPR137C Rabbit Polyclonal Antibody**  
**Catalog #: APRab11639**



Western blot analysis of lysates from HepG2 cells, using GPR137C Antibody. The lane on the right is blocked with the synthesized peptide.



Western Blot analysis of various cells using GPR137C Polyclonal Antibody

## Note

For research use only.