

Product Name: GPR133 Rabbit Polyclonal Antibody
Catalog #: APRab11637



Summary

Production Name	GPR133 Rabbit Polyclonal Antibody
Description	Rabbit Polyclonal Antibody
Host	Rabbit
Application	IF, WB, ELISA
Reactivity	Human, Monkey

Performance

Conjugation	Unconjugated
Modification	Unmodified
Isotype	IgG
Clonality	Polyclonal
Form	Liquid
Storage	Store at 4°C short term. Aliquot and store at -20°C long term. Avoid freeze/thaw cycles.
Buffer	Liquid in PBS containing 50% glycerol, 0.5% BSA and 0.02% New type preservative N.
Purification	Affinity purification

Immunogen

Gene Name	GPR133
Alternative Names	GPR133; PGR25; Probable G-protein coupled receptor 133; G-protein coupled receptor PGR25
Gene ID	283383.0
SwissProt ID	Q6QNK2. The antiserum was produced against synthesized peptide derived from human GPR133. AA range:461-510

Application

Dilution Ratio	WB 1:500 - 1:2000. IF 1:200 - 1:1000. ELISA: 1:5000. Not yet tested in other applications.
Molecular Weight	96kD

Product Name: GPR133 Rabbit Polyclonal Antibody
Catalog #: APRab11637

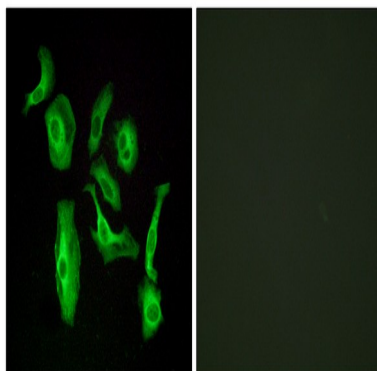


Background

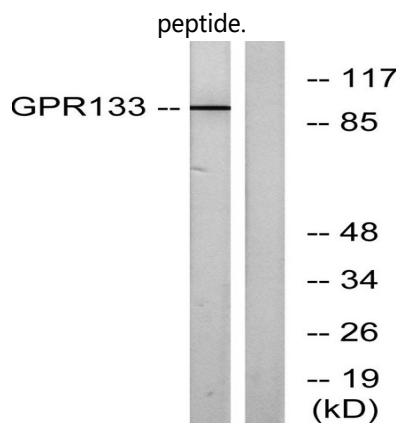
The adhesion G-protein-coupled receptors (GPCRs), including GPR133, are membrane-bound proteins with long N termini containing multiple domains. GPCRs, or GPRs, contain 7 transmembrane domains and transduce extracellular signals through heterotrimeric G proteins (summary by Bjarnadottir et al., 2004 [PubMed 15203201]). [supplied by OMIM, Nov 2010], function: Orphan receptor., similarity: Belongs to the G-protein coupled receptor 2 family. LN-TM7 subfamily., similarity: Contains 1 GPS domain.,

Research Area

Image Data

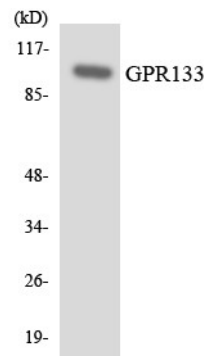


Immunofluorescence analysis of HeLa cells, using GPR133 Antibody. The picture on the right is blocked with the synthesized peptide.



Western blot analysis of lysates from COS7 cells, using GPR133 Antibody. The lane on the right is blocked with the synthesized peptide.

Product Name: GPR133 Rabbit Polyclonal Antibody
Catalog #: APRab11637



Western blot analysis of the lysates from K562 cells using GPR133 antibody.

Note

For research use only.