
Summary

Production Name	GPR132 Rabbit Polyclonal Antibody
Description	Rabbit Polyclonal Antibody
Host	Rabbit
Application	WB,ELISA
Reactivity	Human,Rat,Mouse

Performance

Conjugation	Unconjugated
Modification	Unmodified
Isotype	IgG
Clonality	Polyclonal
Form	Liquid
Storage	Store at 4°C short term. Aliquot and store at -20°C long term. Avoid freeze/thaw cycles.
Buffer	Liquid in PBS containing 50% glycerol, 0.5% BSA and 0.02% New type preservative N.
Purification	Affinity purification

Immunogen

Gene Name	GPR132
Alternative Names	GPR132; G2A; Probable G-protein coupled receptor 132; G2 accumulation protein
Gene ID	29933.0
SwissProt ID	Q9UNW8.The antiserum was produced against synthesized peptide derived from human GPR132. AA range:311-360

Application

Dilution Ratio	WB 1:500 - 1:2000. ELISA: 1:5000
Molecular Weight	42kD

Background

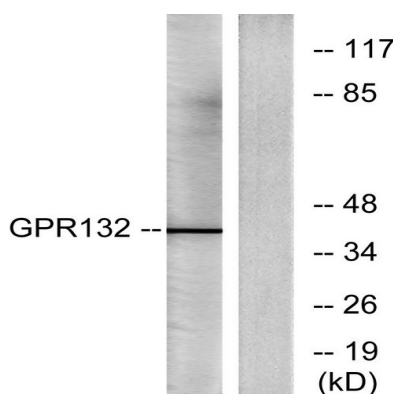
Product Name: GPR132 Rabbit Polyclonal Antibody
Catalog #: APRab11636



This gene encodes a member of the guanine nucleotide-binding protein (G protein)-coupled receptor (GPCR) superfamily. The receptors are seven-pass transmembrane proteins that respond to extracellular cues and activate intracellular signal transduction pathways. This protein was reported to be a receptor for lysophosphatidylcholine action, but PubMedID: 15653487 retracts this finding and instead suggests this protein to be an effector of lysophosphatidylcholine action. This protein may have proton-sensing activity and may be a receptor for oxidized free fatty acids. Alternative splicing results in multiple transcript variants. [provided by RefSeq, Jul 2013],caution:Was originally (PubMed:11474113) thought to be a receptor for lysophosphatidylcholine (LPC) and sphingosylphosphorylcholine (SPC), However, this work has been retracted.,function:Receptor for an unknown ligand. Activates a G alpha protein, most likely G alpha(q). May be involved in apoptosis. Functions at the G2/M checkpoint to delay mitosis. May serve as a mechanism for T- and B-cells, and other cell types, to slow their proliferation and repair damaged DNA to ensure proper replication.,induction:By stress and DNA-damaging agents.,similarity:Belongs to the G-protein coupled receptor 1 family.,subcellular location:Internalized and accumulated in endosomal compartments. LPC triggers the relocalization from the endosomal compartment to the cell surface.,tissue specificity:Highly expressed in macrophages and hematopoietic tissues rich in lymphocytes, like spleen and thymus. Weakly expressed in heart and lung. In atherosclerotic plaques, expression is observed around the lipid core and at the shoulder region.,

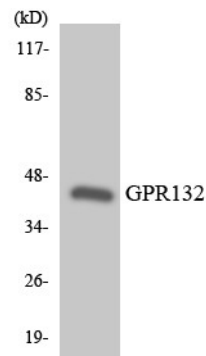
Research Area

Image Data



Western blot analysis of lysates from Jurkat cells, using GPR132 Antibody. The lane on the right is blocked with the synthesized peptide.

Product Name: GPR132 Rabbit Polyclonal Antibody
Catalog #: APRab11636



Western blot analysis of the lysates from HT-29 cells using GPR132 antibody.

Note

For research use only.