

---

## Summary

<b>Production Name</b>	GPR126 Rabbit Polyclonal Antibody
<b>Description</b>	Rabbit Polyclonal Antibody
<b>Host</b>	Rabbit
<b>Application</b>	WB,ELISA
<b>Reactivity</b>	Human,Rat,Mouse

## Performance

<b>Conjugation</b>	Unconjugated
<b>Modification</b>	Unmodified
<b>Isotype</b>	IgG
<b>Clonality</b>	Polyclonal
<b>Form</b>	Liquid
<b>Storage</b>	Store at 4°C short term. Aliquot and store at -20°C long term. Avoid freeze/thaw cycles.
<b>Buffer</b>	Liquid in PBS containing 50% glycerol, 0.5% BSA and 0.02% New type preservative N.
<b>Purification</b>	Affinity purification

## Immunogen

<b>Gene Name</b>	GPR126
<b>Alternative Names</b>	GPR126; DREG; VIGR; G-protein coupled receptor 126; Developmentally regulated G-protein-coupled receptor; Vascular inducible G protein-coupled receptor
<b>Gene ID</b>	57211.0
<b>SwissProt ID</b>	Q86SQ4.The antiserum was produced against synthesized peptide derived from human GPR126. AA range:431-480

## Application

<b>Dilution Ratio</b>	WB 1:500 - 1:2000. ELISA: 1:5000
<b>Molecular Weight</b>	145kD

**Product Name: GPR126 Rabbit Polyclonal Antibody**  
**Catalog #: APRab11635**

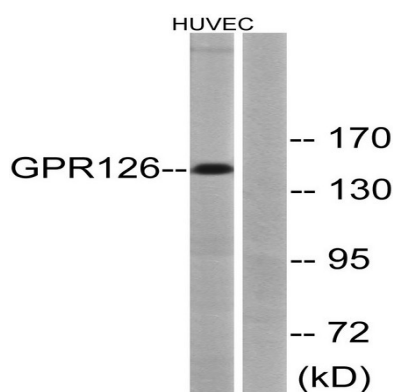


## Background

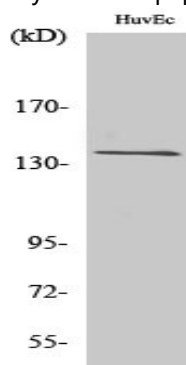
This gene, which is upregulated in human umbilical vein endothelial cells, encodes a G protein-coupled receptor. Variations in this gene can affect a person's stature. Multiple transcript variants encoding different proteins have been found for this gene. [provided by RefSeq, Mar 2009],function:Orphan receptor.,polymorphism:Genetic variations in GPR126 influences stature as a quantitative trait (STQTL) [MIM:606255]. Adult height is an easily observable and highly heritable complex continuous trait. Because of this, it is a model trait for studying genetic influence on quantitative traits.,similarity:Belongs to the G-protein coupled receptor 2 family. LN-TM7 subfamily.,similarity:Contains 1 CUB domain.,similarity:Contains 1 GPS domain.,similarity:Contains 1 pentaxin domain.,

## Research Area

## Image Data



Western blot analysis of lysates from HUVEC cells, using GPR126 Antibody. The lane on the right is blocked with the synthesized peptide.



Western Blot analysis of various cells using GPR126 Polyclonal Antibody diluted at 1: 500

## Note

For research use only.

**Product Name: GPR126 Rabbit Polyclonal Antibody**  
**Catalog #: APRab11635**

---

