

## Summary

<b>Production Name</b>	GPR110 Rabbit Polyclonal Antibody
<b>Description</b>	Rabbit Polyclonal Antibody
<b>Host</b>	Rabbit
<b>Application</b>	IF, WB,
<b>Reactivity</b>	Human, Rat, Mouse

## Performance

<b>Conjugation</b>	Unconjugated
<b>Modification</b>	Unmodified
<b>Isotype</b>	IgG
<b>Clonality</b>	Polyclonal
<b>Form</b>	Liquid
<b>Storage</b>	Store at 4°C short term. Aliquot and store at -20°C long term. Avoid freeze/thaw cycles.
<b>Buffer</b>	Liquid in PBS containing 50% glycerol, 0.5% BSA and 0.02% New type preservative N.
<b>Purification</b>	Affinity purification

## Immunogen

<b>Gene Name</b>	GPR110
<b>Alternative Names</b>	GPR110; PGR19; Probable G-protein coupled receptor 110; G-protein coupled receptor KPG_012; G-protein coupled receptor PGR19
<b>Gene ID</b>	266977.0
<b>SwissProt ID</b>	Q5T601. The antiserum was produced against synthesized peptide derived from human GPR110. AA range:831-880

## Application

<b>Dilution Ratio</b>	WB 1:500 - 1:2000. IF 1:200 - 1:1000. ELISA: 1:40000. Not yet tested in other applications.
<b>Molecular Weight</b>	110kD

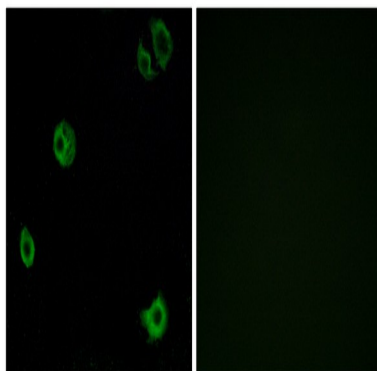
## Background

function:Orphan receptor.,similarity:Belongs to the G-protein coupled receptor 2 family. LN-TM7

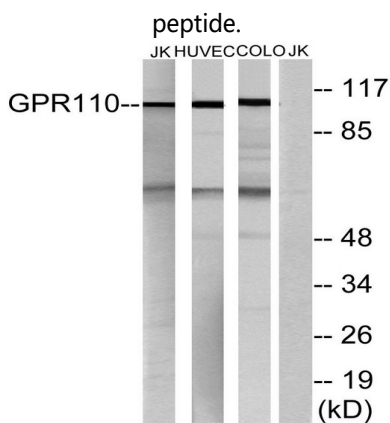
subfamily.,similarity:Contains 1 GPS domain.,similarity:Contains 1 SEA domain.,function:Orphan receptor.,similarity:Belongs to the G-protein coupled receptor 2 family. LN-TM7 subfamily.,similarity:Contains 1 GPS domain.,similarity:Contains 1 SEA domain.,

## Research Area

## Image Data

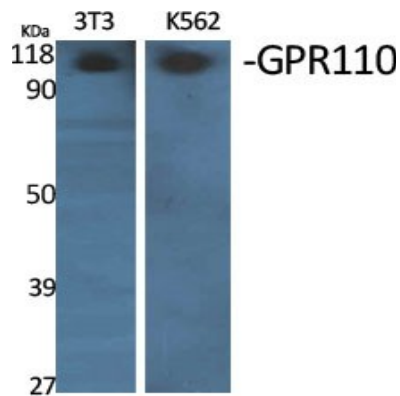


Immunofluorescence analysis of A549 cells, using GPR110 Antibody. The picture on the right is blocked with the synthesized

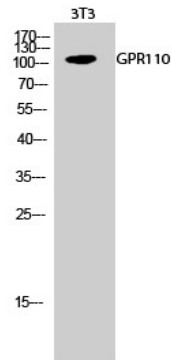


Western blot analysis of lysates from Jurkat, HUVEC, and COLO cells, using GPR110 Antibody. The lane on the right is blocked with the synthesized peptide.

**Product Name: GPR110 Rabbit Polyclonal Antibody**  
**Catalog #: APRab11625**



Western Blot analysis of various cells using GPR110 Polyclonal Antibody



Western Blot analysis of 3T3 cells using GPR110 Polyclonal Antibody

**Note**

For research use only.