

---

## Summary

<b>Production Name</b>	GPR107 Rabbit Polyclonal Antibody
<b>Description</b>	Rabbit Polyclonal Antibody
<b>Host</b>	Rabbit
<b>Application</b>	WB,ELISA
<b>Reactivity</b>	Human,Rat,Mouse

## Performance

<b>Conjugation</b>	Unconjugated
<b>Modification</b>	Unmodified
<b>Isotype</b>	IgG
<b>Clonality</b>	Polyclonal
<b>Form</b>	Liquid
<b>Storage</b>	Store at 4°C short term. Aliquot and store at -20°C long term. Avoid freeze/thaw cycles.
<b>Buffer</b>	Liquid in PBS containing 50% glycerol, 0.5% BSA and 0.02% New type preservative N.
<b>Purification</b>	Affinity purification

## Immunogen

<b>Gene Name</b>	GPR107
<b>Alternative Names</b>	GPR107; KIAA1624; LUSTR1; Protein GPR107; Lung seven transmembrane receptor 1
<b>Gene ID</b>	57720.0
<b>SwissProt ID</b>	Q5VW38.The antiserum was produced against synthesized peptide derived from human GPR107. AA range:141-190

## Application

<b>Dilution Ratio</b>	WB 1:500 - 1:2000. ELISA: 1:5000
<b>Molecular Weight</b>	67kD

## Background

---

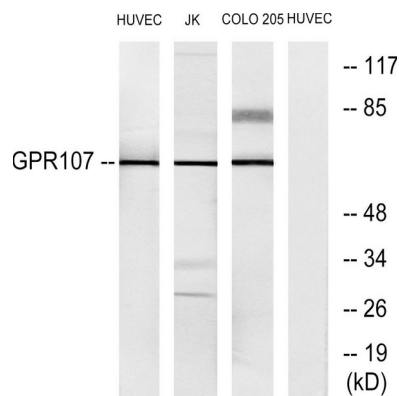
**Product Name: GPR107 Rabbit Polyclonal Antibody**  
**Catalog #: APRab11623**



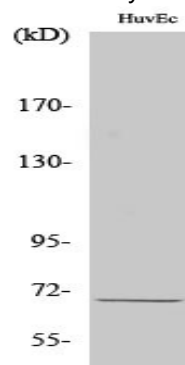
similarity:Belongs to the LU7TM family.,similarity:Belongs to the LU7TM family.,

## Research Area

## Image Data



Western blot analysis of lysates from HUVEC, Jurkat, and COLO205 cells, using GPR107 Antibody. The lane on the right is blocked with the synthesized peptide.



Western Blot analysis of various cells using GPR107 Polyclonal Antibody

## Note

For research use only.