

Summary

Production Name	GPR10 Rabbit Polyclonal Antibody
Description	Rabbit Polyclonal Antibody
Host	Rabbit
Application	WB
Reactivity	Human,Mouse,Rat

Performance

Conjugation	Unconjugated
Modification	Unmodified
Isotype	IgG
Clonality	Polyclonal
Form	Liquid
Storage	Store at 4°C short term. Aliquot and store at -20°C long term. Avoid freeze/thaw cycles.
Buffer	Liquid in PBS containing 50% glycerol, 0.5% BSA and 0.02% New type preservative N.
Purification	Affinity purification

Immunogen

Gene Name	PRLHR
Alternative Names	PRLHR; GPR10; GR3; Prolactin-releasing peptide receptor; PrRP receptor; PrRPR; G-protein coupled receptor 10; hGR3
Gene ID	2834.0
SwissProt ID	P49683.The antiserum was produced against synthesized peptide derived from human PRLHR. AA range:184-233

Application

Dilution Ratio	WB 1:500-1:2000. ELISA: 1:20000.
Molecular Weight	41kD

Background

Product Name: GPR10 Rabbit Polyclonal Antibody
Catalog #: APRab11618

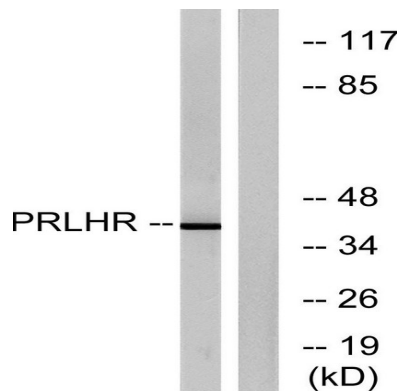


PRLHR is a 7-transmembrane domain receptor for prolactin-releasing hormone (PRLH; MIM 602663) that is highly expressed in anterior pituitary (Ozawa et al., 2002 [PubMed 11923475]).[supplied by OMIM, Mar 2008],function:Receptor for prolactin-releasing peptide (PrRP). Implicated in lactation, regulation of food intake and pain-signal processing.,induction:Repressed by bromocriptine, a dopamine agonist.,similarity:Belongs to the G-protein coupled receptor 1 family.,subunit:Interacts through its C-terminal region with the PDZ domain-containing proteins GRIP1, GRIP2 and PICK1. Interacts with PDZ domains 4 and 5 of GRIP1 and with the PDZ domain of PICK1.,tissue specificity:Only detected in the pituitary gland and in all cell types of pituitary adenomas.,

Research Area

Neuroactive ligand-receptor interaction;

Image Data



Western blot analysis of lysates from Jurkat cells, using PRLHR Antibody. The lane on the right is blocked with the synthesized peptide.

Note

For research use only.