

## Summary

<b>Production Name</b>	GMF- $\gamma$ Rabbit Polyclonal Antibody
<b>Description</b>	Rabbit Polyclonal Antibody
<b>Host</b>	Rabbit
<b>Application</b>	IHC,ELISA
<b>Reactivity</b>	Human,Rat,Mouse

## Performance

<b>Conjugation</b>	Unconjugated
<b>Modification</b>	Unmodified
<b>Isotype</b>	IgG
<b>Clonality</b>	Polyclonal
<b>Form</b>	Liquid
<b>Storage</b>	Store at 4°C short term. Aliquot and store at -20°C long term. Avoid freeze/thaw cycles.
<b>Buffer</b>	Liquid in PBS containing 50% glycerol, 0.5% BSA and 0.02% New type preservative N.
<b>Purification</b>	Affinity purification

## Immunogen

<b>Gene Name</b>	GMFG
<b>Alternative Names</b>	Glia maturation factor gamma (GMF-gamma)
<b>Gene ID</b>	9535.0
<b>SwissProt ID</b>	O60234.Synthetic peptide from human protein at AA range: 1-50

## Application

<b>Dilution Ratio</b>	IHC-p 1:50-200, ELISA 1:10000-20000.
<b>Molecular Weight</b>	

## Background

similarity:Belongs to the actin-binding proteins ADF family. GMF subfamily.,similarity:Contains 1 ADF-H domain.,tissue

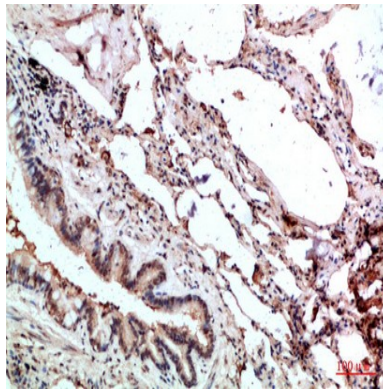
**Product Name: GMF- $\gamma$  Rabbit Polyclonal Antibody**  
**Catalog #: APRab11534**



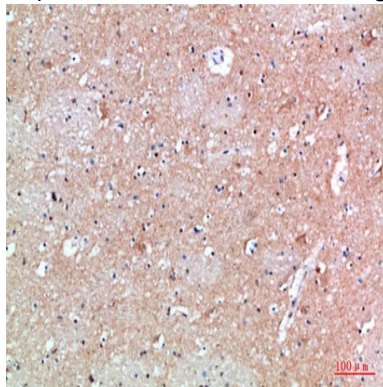
specificity:Expressed predominantly in lung, heart and placenta.,similarity:Belongs to the actin-binding proteins ADF family.  
GMF subfamily.,similarity:Contains 1 ADF-H domain.,tissue specificity:Expressed predominantly in lung, heart and placenta.,

## Research Area

## Image Data



Immunohistochemical analysis of paraffin-embedded human-lung, antibody was diluted at 1:200



Immunohistochemical analysis of paraffin-embedded human-brain, antibody was diluted at 1:200

## Note

For research use only.