

Product Name: Glypican-5 Rabbit Polyclonal Antibody
Catalog #: APRab11523



Summary

Production Name	Glypican-5 Rabbit Polyclonal Antibody
Description	Rabbit Polyclonal Antibody
Host	Rabbit
Application	WB
Reactivity	Human,Mouse,Rat

Performance

Conjugation	Unconjugated
Modification	Unmodified
Isotype	IgG
Clonality	Polyclonal
Form	Liquid
Storage	Store at 4°C short term. Aliquot and store at -20°C long term. Avoid freeze/thaw cycles.
Buffer	Liquid in PBS containing 50% glycerol, 0.5% BSA and 0.02% New type preservative N.
Purification	Affinity purification

Immunogen

Gene Name	GPC5
Alternative Names	GPC5; Glypican-5
Gene ID	2262.0
SwissProt ID	P78333.Synthesized peptide derived from the Internal region of human Glypican-5.

Application

Dilution Ratio	WB 1:500-1:2000. ELISA: 1:40000.
Molecular Weight	65kD

Background

Cell surface heparan sulfate proteoglycans are composed of a membrane-associated protein core substituted with a variable number of heparan sulfate chains. Members of the glypican-related integral membrane proteoglycan family

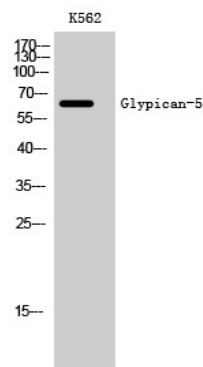
Product Name: Glypican-5 Rabbit Polyclonal Antibody
Catalog #: APRab11523



(GRIPS) contain a core protein anchored to the cytoplasmic membrane via a glycosyl phosphatidylinositol linkage. These proteins may play a role in the control of cell division and growth regulation. [provided by RefSeq, Jul 2008],function:Cell surface proteoglycan that bears heparan sulfate.,similarity:Belongs to the glypican family.,tissue specificity:In adult, primarily expressed in the brain. Also detected in fetal brain, lung and liver.,

Research Area

Image Data



Western Blot analysis of K562 cells using Glypican-5 Polyclonal Antibody

Note

For research use only.