

Product Name: Glycerate Kinase Rabbit Polyclonal Antibody
Catalog #: APRab11511

Summary

Production Name	Glycerate Kinase Rabbit Polyclonal Antibody
Description	Rabbit Polyclonal Antibody
Host	Rabbit
Application	IF,IHC,WB,
Reactivity	Human,Mouse,Rat

Performance

Conjugation	Unconjugated
Modification	Unmodified
Isotype	IgG
Clonality	Polyclonal
Form	Liquid
Storage	Store at 4°C short term. Aliquot and store at -20°C long term. Avoid freeze/thaw cycles.
Buffer	Liquid in PBS containing 50% glycerol, 0.5% BSA and 0.02% New type preservative N.
Purification	Affinity purification

Immunogen

Gene Name	GLYCTK
Alternative Names	GLYCTK; HBEBP4; LP5910; Glycerate kinase; HBeAg-binding protein 4
Gene ID	132158.0
SwissProt ID	Q81VS8.The antiserum was produced against synthesized peptide derived from human GLCTK. AA range:101-150

Application

Dilution Ratio	WB 1:500 - 1:2000 IHC 1:100 - 1:300. IF 1:200 - 1:1000. ELISA: 1:20000. Not yet tested in other applications.
Molecular Weight	60kD

Product Name: Glycerate Kinase Rabbit Polyclonal Antibody
Catalog #: APRab11511



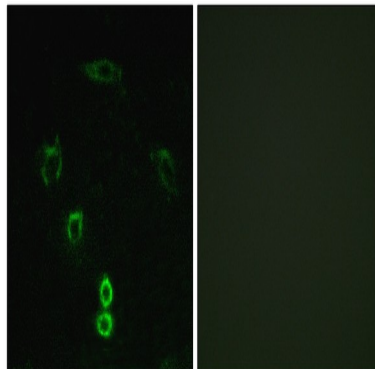
Background

This locus encodes a member of the glycerate kinase type-2 family. The encoded enzyme catalyzes the phosphorylation of (R)-glycerate and may be involved in serine degradation and fructose metabolism. Decreased activity of the encoded enzyme may be associated with the disease D-glyceric aciduria. Alternatively spliced transcript variants have been described. [provided by RefSeq, Jan 2009],catalytic activity:ATP + (R)-glycerate = ADP + 3-phospho-(R)-glycerate.,disease:Defects in GLYCK are the cause of D-glyceric acidemia [MIM:220120]. It is characterized by nonketotic hyperglycinemia with the excretion of D-glyceric acid in the urine and the presence of this substance in the serum.,similarity:Belongs to the glycerate kinase type-2 family.,tissue specificity:Widely expressed.,

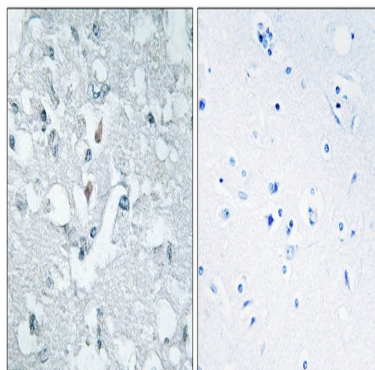
Research Area

Glycine; serine and threonine metabolism;Glycerolipid metabolism;Glyoxylate and dicarboxylate metabolism;

Image Data

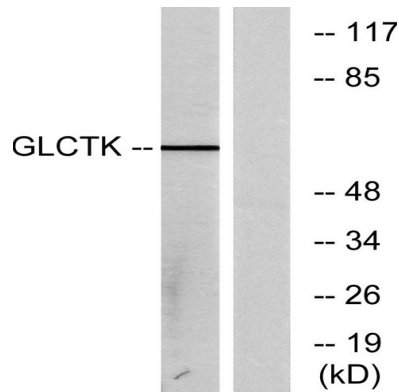


Immunofluorescence analysis of A549 cells, using GLCKT Antibody. The picture on the right is blocked with the synthesized peptide.

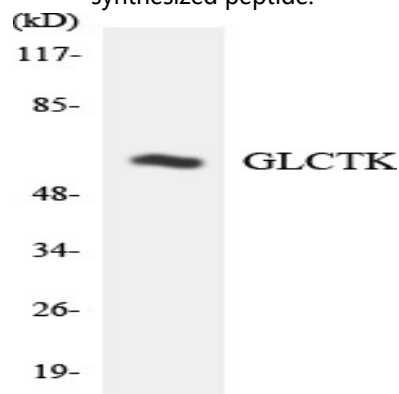


Immunohistochemistry analysis of paraffin-embedded human brain tissue, using GLCKT Antibody. The picture on the right is blocked with the synthesized peptide.

Product Name: Glycerate Kinase Rabbit Polyclonal Antibody
Catalog #: APRab11511



Western blot analysis of lysates from NIH/3T3 cells, using GLCTK Antibody. The lane on the right is blocked with the synthesized peptide.



Western blot analysis of the lysates from HUVEC cells using GLCTK antibody.

Note

For research use only.