
Summary

Production Name	GluR- δ 2 Rabbit Polyclonal Antibody
Description	Rabbit Polyclonal Antibody
Host	Rabbit
Application	IF, WB, ELISA
Reactivity	Human, Mouse, Rat

Performance

Conjugation	Unconjugated
Modification	Unmodified
Isotype	IgG
Clonality	Polyclonal
Form	Liquid
Storage	Store at 4°C short term. Aliquot and store at -20°C long term. Avoid freeze/thaw cycles.
Buffer	Liquid in PBS containing 50% glycerol, 0.5% BSA and 0.02% New type preservative N.
Purification	Affinity purification

Immunogen

Gene Name	GRID2
Alternative Names	GRID2; GLURD2; Glutamate receptor delta-2 subunit; GluR delta-2 subunit
Gene ID	2895.0
SwissProt ID	O43424. The antiserum was produced against synthesized peptide derived from human GRID2. AA range: 831-880

Application

Dilution Ratio	WB 1:500 - 1:2000. IF 1:200 - 1:1000. ELISA: 1:20000. Not yet tested in other applications.
Molecular Weight	113kD

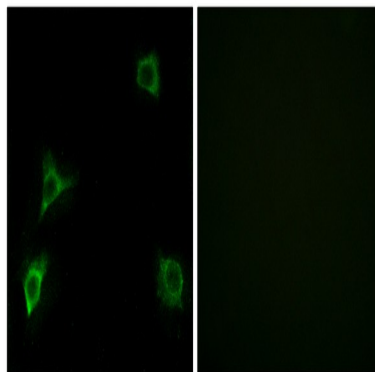
Background

The protein encoded by this gene is a member of the family of ionotropic glutamate receptors which are the predominant excitatory neurotransmitter receptors in the mammalian brain. The encoded protein is a multi-pass membrane protein that is expressed selectively in cerebellar Purkinje cells. A point mutation in the mouse ortholog, associated with the phenotype named 'lurcher', in the heterozygous state leads to ataxia resulting from selective, cell-autonomous apoptosis of cerebellar Purkinje cells during postnatal development. Mice homozygous for this mutation die shortly after birth from massive loss of mid- and hindbrain neurons during late embryogenesis. This protein also plays a role in synapse organization between parallel fibers and Purkinje cells. Alternate splicing results in multiple transcript variants encoding distinct isoforms. Mutations in this domain: The PDZ-binding motif mediates interaction with GOPC., function: Receptor for glutamate. L-glutamate acts as an excitatory neurotransmitter at many synapses in the central nervous system. The postsynaptic actions of Glu are mediated by a variety of receptors that are named according to their selective agonists., similarity: Belongs to the glutamate-gated ion channel (TC 1.A.10) family., subunit: Interacts with AIP1, AP4M1, BECN1, GOPC, GRID2IP, SHANK1 and SHANK2.,

Research Area

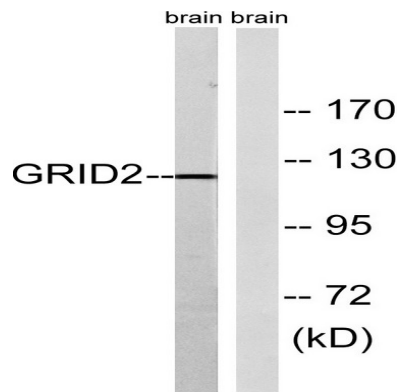
Neuroactive ligand-receptor interaction; Long-term depression;

Image Data

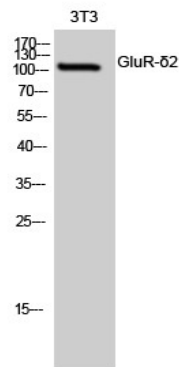


Immunofluorescence analysis of HUVEC cells, using GRID2 Antibody. The picture on the right is blocked with the synthesized peptide.

Product Name: GluR- δ 2 Rabbit Polyclonal Antibody
Catalog #: APRab11497



Western blot analysis of lysates from mouse brain, using GRID2 Antibody. The lane on the right is blocked with the synthesized peptide.



Western Blot analysis of 3T3 cells using GluR- δ 2 Polyclonal Antibody

Note

For research use only.