
Summary

Production Name	GluR- δ 1 Rabbit Polyclonal Antibody
Description	Rabbit Polyclonal Antibody
Host	Rabbit
Application	IHC, WB, ELISA
Reactivity	Human, Mouse, Rat

Performance

Conjugation	Unconjugated
Modification	Unmodified
Isotype	IgG
Clonality	Polyclonal
Form	Liquid
Storage	Store at 4°C short term. Aliquot and store at -20°C long term. Avoid freeze/thaw cycles.
Buffer	Liquid in PBS containing 50% glycerol, 0.5% BSA and 0.02% New type preservative N.
Purification	Affinity purification

Immunogen

Gene Name	GRID1
Alternative Names	GRID1; KIAA1220; Glutamate receptor delta-1 subunit; GluR delta-1 subunit
Gene ID	2894.0
SwissProt ID	Q9ULK0. The antiserum was produced against synthesized peptide derived from human GRID1. AA range: 831-880

Application

Dilution Ratio	WB 1:500 - 1:2000. IHC 1:100 - 1:300. ELISA: 1:40000..
Molecular Weight	95kD

Background

Product Name: GluR- δ 1 Rabbit Polyclonal Antibody
Catalog #: APRab11496

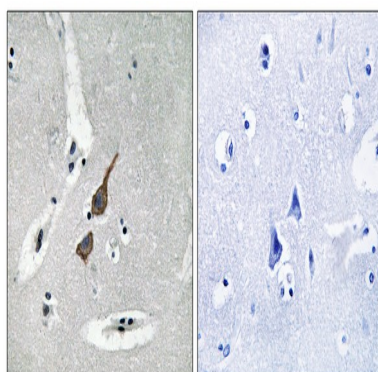


This gene encodes a subunit of glutamate receptor channels. These channels mediate most of the fast excitatory synaptic transmission in the central nervous system and play key roles in synaptic plasticity.[provided by RefSeq, Jan 2009],function:Receptor for glutamate. L-glutamate acts as an excitatory neurotransmitter at many synapses in the central nervous system. The postsynaptic actions of Glu are mediated by a variety of receptors that are named according to their selective agonists.,similarity:Belongs to the glutamate-gated ion channel (TC 1.A.10) family.,

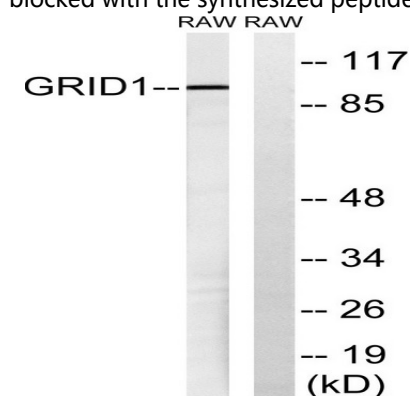
Research Area

Neuroactive ligand-receptor interaction;

Image Data

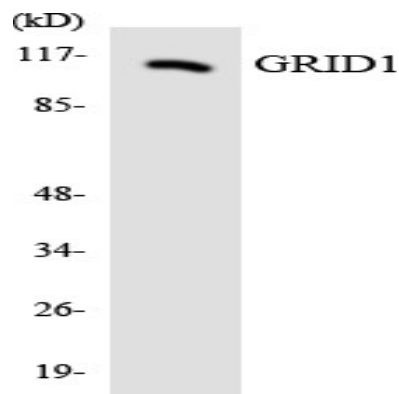


Immunohistochemistry analysis of paraffin-embedded human brain tissue, using GRID1 Antibody. The picture on the right is blocked with the synthesized peptide.



Western blot analysis of lysates from RAW264.7 cells, using GRID1 Antibody. The lane on the right is blocked with the synthesized peptide.

Product Name: GluR- δ 1 Rabbit Polyclonal Antibody
Catalog #: APRab11496



Western blot analysis of the lysates from RAW264.7 cells using GRID1 antibody.

Note

For research use only.