

## Summary

<b>Production Name</b>	GIMAP5 Rabbit Polyclonal Antibody
<b>Description</b>	Rabbit Polyclonal Antibody
<b>Host</b>	Rabbit
<b>Application</b>	IHC, WB, ELISA
<b>Reactivity</b>	Human, Rat, Mouse

## Performance

<b>Conjugation</b>	Unconjugated
<b>Modification</b>	Unmodified
<b>Isotype</b>	IgG
<b>Clonality</b>	Polyclonal
<b>Form</b>	Liquid
<b>Storage</b>	Store at 4°C short term. Aliquot and store at -20°C long term. Avoid freeze/thaw cycles.
<b>Buffer</b>	Liquid in PBS containing 50% glycerol, 0.5% BSA and 0.02% New type preservative N.
<b>Purification</b>	Affinity purification

## Immunogen

<b>Gene Name</b>	GIMAP5
<b>Alternative Names</b>	GIMAP5; IAN4L1; IAN5; IMAP3; GTPase IMAP family member 5; Immunity-associated nucleotide 4-like 1 protein; Immunity-associated nucleotide 5 protein; IAN-5; hIAN5; Immunity-associated protein 3
<b>Gene ID</b>	55340.0
<b>SwissProt ID</b>	Q96F15. The antiserum was produced against synthesized peptide derived from human GIMAP5. AA range:231-280

## Application

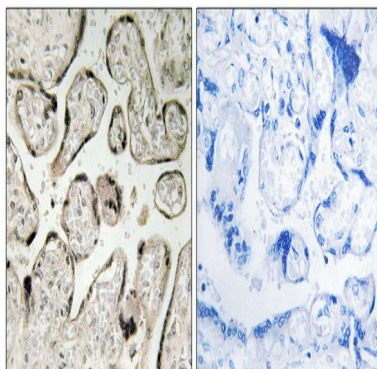
<b>Dilution Ratio</b>	WB 1:500 - 1:2000. IHC 1:100 - 1:300. ELISA: 1:20000..
<b>Molecular Weight</b>	35kD

## Background

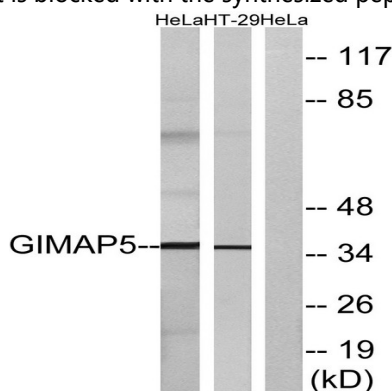
This gene encodes a protein belonging to the GTP-binding superfamily and to the immuno-associated nucleotide (IAN) subfamily of nucleotide-binding proteins. In humans, the IAN subfamily genes are located in a cluster at 7q36.1. This gene encodes an antiapoptotic protein that functions in T-cell survival. Polymorphisms in this gene are associated with systemic lupus erythematosus. Read-through transcription exists between this gene and the neighboring upstream GIMAP1 (GTPase, IMAP family member 1) gene. [provided by RefSeq, Dec 2010],function:Required for mitochondrial integrity and T-cell survival. May contribute to T-cell quiescence.,similarity:Belongs to the IAN GTP-binding protein family.,tissue specificity:Widely expressed with high levels in lymph node and spleen. High expression found in CD4 and CD8-positive T-cells and monocytes with very low levels in B-lymphocytes. Highly expressed in B-lymphocyte-derived neoplasms.,

## Research Area

## Image Data

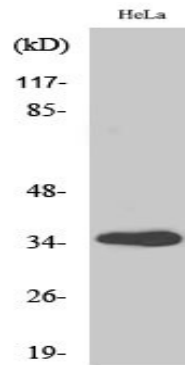


Immunohistochemistry analysis of paraffin-embedded human placenta tissue, using GIMAP5 Antibody. The picture on the right is blocked with the synthesized peptide.



Western blot analysis of lysates from HeLa and HT-29 cells, using GIMAP5 Antibody. The lane on the right is blocked with the synthesized peptide.

**Product Name: GIMAP5 Rabbit Polyclonal Antibody**  
**Catalog #: APRab11444**



Western Blot analysis of various cells using GIMAP5 Polyclonal Antibody

**Note**

For research use only.