

Summary

Production Name	GIMAP4 Rabbit Polyclonal Antibody
Description	Rabbit Polyclonal Antibody
Host	Rabbit
Application	WB,ELISA
Reactivity	Human,Rat,Mouse

Performance

Conjugation	Unconjugated
Modification	Unmodified
Isotype	IgG
Clonality	Polyclonal
Form	Liquid
Storage	Store at 4°C short term. Aliquot and store at -20°C long term. Avoid freeze/thaw cycles.
Buffer	Liquid in PBS containing 50% glycerol, 0.5% BSA and 0.02% New type preservative N.
Purification	Affinity purification

Immunogen

Gene Name	GIMAP4
Alternative Names	GIMAP4; IAN1; IMAP4; MSTP062; GTPase IMAP family member 4; Immunity-associated nucleotide 1 protein; IAN-1; hIAN1; Immunity-associated protein 4
Gene ID	55303.0
SwissProt ID	Q9NUV9.The antiserum was produced against synthesized peptide derived from human GIMAP4. AA range:131-180

Application

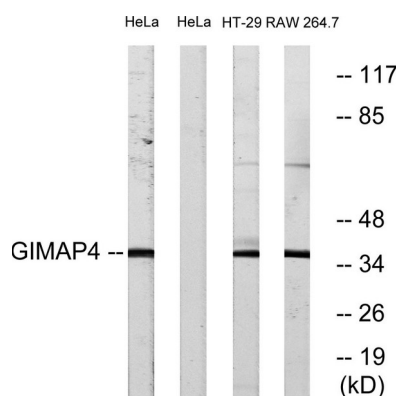
Dilution Ratio	WB 1:500 - 1:2000. ELISA: 1:5000..
Molecular Weight	38kD

Background

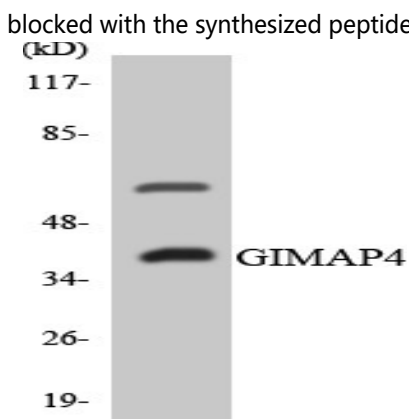
This gene encodes a protein belonging to the GTP-binding superfamily and to the immuno-associated nucleotide (IAN) subfamily of nucleotide-binding proteins. The encoded protein of this gene may be negatively regulated by T-cell acute lymphocytic leukemia 1 (TAL1). In humans, the IAN subfamily genes are located in a cluster at 7q36.1. [provided by RefSeq, Jul 2008],function:Exhibits intrinsic GTPase activity. Shows a higher affinity for GDP over GTP (about 12-fold higher), and binding shows an absolute requirement for magnesium.,similarity:Belongs to the IAN GTP-binding protein family.,tissue specificity:Highly expressed in spleen and peripheral blood leukocytes that contain mostly T- and B-lymphocytes. Expressed specifically in resting T- and B-lymphocytes and expression significantly decreases during B- or T-lymphocyte activation. Expressed at lower levels in thymus, ovary, colon and small intestine.,

Research Area

Image Data

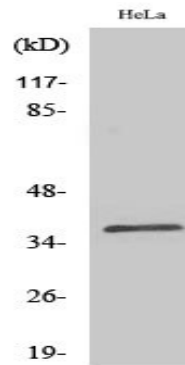


Western blot analysis of lysates from HeLa, HT-29, and RAW264.7 cells, using GIMAP4 Antibody. The lane on the right is blocked with the synthesized peptide.



Western blot analysis of the lysates from COLO205 cells using GIMAP4 antibody.

Product Name: GIMAP4 Rabbit Polyclonal Antibody
Catalog #: APRab11443



Western Blot analysis of various cells using GIMAP4 Polyclonal Antibody

Note

For research use only.