

Summary

Production Name	GHR Rabbit Polyclonal Antibody
Description	Rabbit Polyclonal Antibody
Host	Rabbit
Application	WB
Reactivity	Human,Mouse,Rat

Performance

Conjugation	Unconjugated
Modification	Unmodified
Isotype	IgG
Clonality	Polyclonal
Form	Liquid
Storage	Store at 4°C short term. Aliquot and store at -20°C long term. Avoid freeze/thaw cycles.
Buffer	Liquid in PBS containing 50% glycerol, 0.5% BSA and 0.02% New type preservative N.
Purification	Affinity purification

Immunogen

Gene Name	GHR
Alternative Names	GHR; Growth hormone receptor; GH receptor; Somatotropin receptor
Gene ID	2690.0
SwissProt ID	P10912.The antiserum was produced against synthesized peptide derived from the N-terminal region of human GHR. AA range:21-70

Application

Dilution Ratio	WB 1:500-1:2000. ELISA: 1:10000.
Molecular Weight	140kD

Background

This gene encodes a member of the type I cytokine receptor family, which is a transmembrane receptor for growth

Product Name: GHR Rabbit Polyclonal Antibody
Catalog #: APRab11437



hormone. Binding of growth hormone to the receptor leads to receptor dimerization and the activation of an intra- and intercellular signal transduction pathway leading to growth. Mutations in this gene have been associated with Laron syndrome, also known as the growth hormone insensitivity syndrome (GHIS), a disorder characterized by short stature. In humans and rabbits, but not rodents, growth hormone binding protein (GHBP) is generated by proteolytic cleavage of the extracellular ligand-binding domain from the mature growth hormone receptor protein. Multiple alternatively spliced transcript variants have been found for this gene.[provided by RefSeq, Jun 2011],disease:Defects in GHR are a cause of Laron dwarfism [MIM:262500]; also known as pituitary dwarfism II; Laron-type pituitary dwarfism I (LTD1) or Laron syndrome (LS). It is the most severe form of growth hormone insensitivity (GHI) characterized by growth impairment, dysmorphic facial features and truncal obesity. Levels of GHBP are low or undetectable in patients with Laron syndrome.,disease:Defects in GHR may be a cause of short stature [MIM:604271]. Short stature is defined by a subnormal rate of growth.,domain:The box 1 motif is required for JAK interaction and/or activation.,domain:The extracellular domain is the ligand-binding domain representing the growth hormone-binding protein (GHBP),,domain:The ubiquitination-dependent endocytosis motif (UbE) is required for recruitment of the ubiquitin conjugation system on to the receptor and for its internalization.,domain:The WSXWS motif appears to be necessary for proper protein folding and thereby efficient intracellular transport and cell-surface receptor binding.,function:Isoform 2 up-regulates the production of GHBP and acts as a negative inhibitor of GH signaling.,function:Receptor for pituitary gland growth hormone involved in regulating postnatal body growth. On ligand binding, couples to the JAK2/STAT5 pathway.,function:The soluble form (GHBP) acts as a reservoir of growth hormone in plasma and may be a modulator/inhibitor of GH signaling.,polymorphism:Genetic variation in GHR may act as phenotype modifier in familial hypercholesterolemia [MIM:143890] patients carrying a mutation in the LDLR gene.,PTM:On GH binding, phosphorylated on tyrosine residues in the cytoplasmic domain by JAK2.,PTM:On ligand binding, ubiquitinated on lysine residues in the cytoplasmic domain. This ubiquitination is not sufficient for GHR internalization.,PTM:The soluble form (GHBP) is produced by phorbol ester-promoted proteolytic cleavage at the cell surface (shedding) by ADAM17/TACE. Shedding is inhibited by growth hormone (GH) binding to the receptor probably due to a conformational change in GHR rendering the receptor inaccessible to ADAM17.,similarity:Belongs to the type I cytokine receptor family. Type 1 subfamily.,similarity:Contains 1 fibronectin type-III domain.,subcellular location:On growth hormone binding, GHR is ubiquitinated, internalized, down-regulated and transported into a degradative or non-degradative pathway.,subcellular location:Remains fixed to the cell membrane and is not internalized.,subunit:On growth hormone (GH) binding, forms homodimers and binds JAK2 via a box 1-containing domain (By similarity). Binding to SOCS3 inhibits JAK2 activation, binding to CIS and SOCS2 inhibits STAT5 activation (By similarity). Interacts with ADAM17.,tissue specificity:Expressed in various tissues with high expression in liver and skeletal muscle. Isoform 4 is predominantly expressed in kidney, bladder, adrenal gland and brain stem. In the placenta, isoform 1 predominantly expressed in chorion and decidua, isoform 4 highly expressed in villi. Isoform 2 is expressed in lung, stomach and muscle. Low levels in liver.,

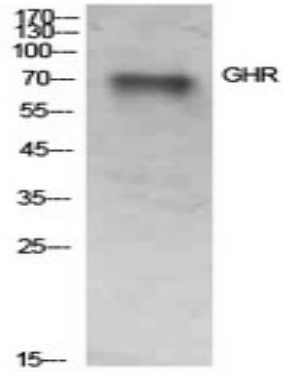
Research Area

Cytokine-cytokine receptor interaction;Neuroactive ligand-receptor interaction;Jak_STAT;

Product Name: GHR Rabbit Polyclonal Antibody
Catalog #: APRab11437



Image Data



Western Blot analysis of SKOV3 cells using GHR Polyclonal Antibody.. Secondary antibody was diluted at 1:20000

Note

For research use only.