

Summary

Production Name	GGH Rabbit Polyclonal Antibody
Description	Rabbit Polyclonal Antibody
Host	Rabbit
Application	WB
Reactivity	Human,Rat,Mouse

Performance

Conjugation	Unconjugated
Modification	Unmodified
Isotype	IgG
Clonality	Polyclonal
Form	Liquid
Storage	Store at 4°C short term. Aliquot and store at -20°C long term. Avoid freeze/thaw cycles.
Buffer	Liquid in PBS containing 50% glycerol, 0.5% BSA and 0.02% New type preservative N.
Purification	Affinity purification

Immunogen

Gene Name	GGH
Alternative Names	GGH; Gamma-glutamyl hydrolase; Conjugase; GH; Gamma-Glu-X carboxypeptidase
Gene ID	8836.0
SwissProt ID	Q92820.The antiserum was produced against synthesized peptide derived from human GGH. AA range:251-300

Application

Dilution Ratio	WB 1:500-1:2000. ELISA: 1:10000.
Molecular Weight	36kD

Background

This gene catalyzes the hydrolysis of foylpoly-gamma-glutamates and antifoylpoly-gamma-glutamates by the removal of

Product Name: GGH Rabbit Polyclonal Antibody
Catalog #: APRab11428

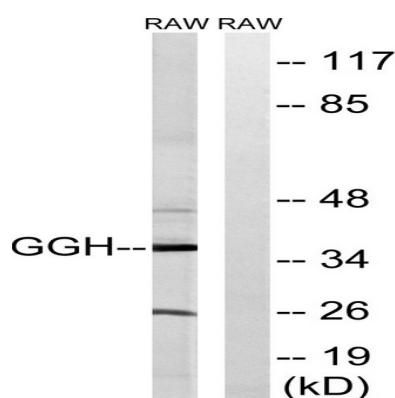


gamma-linked polyglutamates and glutamate. [provided by RefSeq, Jul 2008],catalytic activity:Hydrolysis of a gamma-glutamyl bond.,function:Hydrolyzes the polyglutamate sidechains of pteroylpolyglutamates. Progressively removes gamma-glutamyl residues from pteroylpoly-gamma-glutamate to yield pteroyl-alpha-glutamate (folic acid) and free glutamate. May play an important role in the bioavailability of dietary pteroylpolyglutamates and in the metabolism of pteroylpolyglutamates and antifolates.,similarity:Belongs to the peptidase C26 family.,similarity:Contains 1 gamma-glutamyl hydrolase domain.,subcellular location:While its intracellular location is primarily the lysosome, most of the enzyme activity is secreted. Identified by mass spectrometry in melanosome fractions from stage I to stage IV.,

Research Area

Folate biosynthesis;

Image Data



Western blot analysis of lysates from RAW264.7 cells, using GGH Antibody. The lane on the right is blocked with the synthesized peptide.

Note

For research use only.