
Summary

Production Name	GDF-9 Rabbit Polyclonal Antibody
Description	Rabbit Polyclonal Antibody
Host	Rabbit
Application	IHC,WB,
Reactivity	Human,Rat,Mouse

Performance

Conjugation	Unconjugated
Modification	Unmodified
Isotype	IgG
Clonality	Polyclonal
Form	Liquid
Storage	Store at 4°C short term. Aliquot and store at -20°C long term. Avoid freeze/thaw cycles.
Buffer	Liquid in PBS containing 50% glycerol, 0.5% BSA and 0.02% New type preservative N.
Purification	Affinity purification

Immunogen

Gene Name	GDF9
Alternative Names	GDF9; Growth/differentiation factor 9; GDF-9
Gene ID	2661.0
SwissProt ID	O60383.The antiserum was produced against synthesized peptide derived from human GDF-9. AA range:273-322

Application

Dilution Ratio	WB 1:500 - 1:2000. IHC 1:100 - 1:300. ELISA: 1:10000..
Molecular Weight	57kD

Background

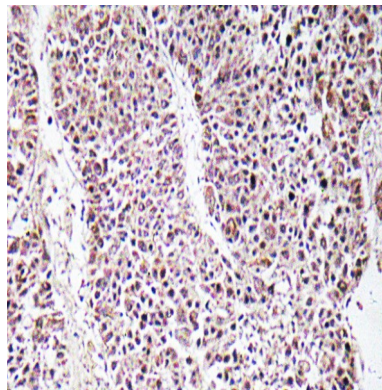
Product Name: GDF-9 Rabbit Polyclonal Antibody
Catalog #: APRab11389



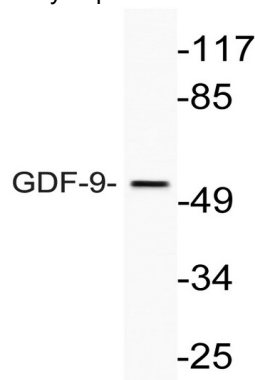
This gene encodes a secreted ligand of the TGF-beta (transforming growth factor-beta) superfamily of proteins. Ligands of this family bind various TGF-beta receptors leading to recruitment and activation of SMAD family transcription factors that regulate gene expression. The encoded preproprotein is proteolytically processed to generate each subunit of the disulfide-linked homodimer. This protein regulates ovarian function. Reduced expression of this gene may be associated with polycystic ovary syndrome and mutations in this gene may be more common in mothers of dizygotic twins. [provided by RefSeq, Jul 2016],function:Required for ovarian folliculogenesis.,similarity:Belongs to the TGF-beta family.,subunit:Homodimer or heterodimer (Potential). But, in contrast to other members of this family, cannot be disulfide-linked.,

Research Area

Image Data

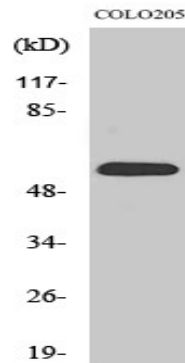


Immunohistochemistry analysis of GDF-9 antibody in paraffin-embedded human liver carcinoma tissue.

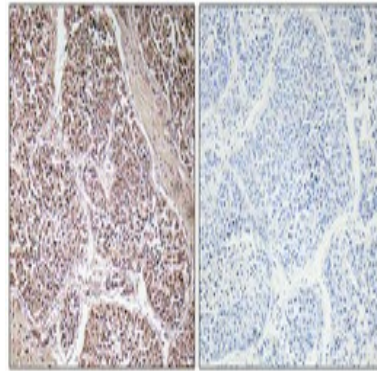


Western blot analysis of lysate from COLO205 cells, using GDF-9 antibody.

Product Name: GDF-9 Rabbit Polyclonal Antibody
Catalog #: APRab11389



Western Blot analysis of various cells using GDF-9 Polyclonal Antibody



Immunohistochemical analysis of paraffin-embedded Human lung cancer. Antibody was diluted at 1:100 (4°, overnight) . High-pressure and temperature Tris-EDTA, pH 8.0 was used for antigen retrieval. Negative control (right) obtained from antibody was pre-absorbed by immunogen peptide.

Note

For research use only.