

Summary

Production Name	GCS- β -2 Rabbit Polyclonal Antibody
Description	Rabbit Polyclonal Antibody
Host	Rabbit
Application	IHC,ELISA
Reactivity	Human,Mouse,Rat

Performance

Conjugation	Unconjugated
Modification	Unmodified
Isotype	IgG
Clonality	Polyclonal
Form	Liquid
Storage	Store at 4°C short term. Aliquot and store at -20°C long term. Avoid freeze/thaw cycles.
Buffer	Liquid in PBS containing 50% glycerol, 0.5% BSA and 0.02% New type preservative N.
Purification	Affinity purification

Immunogen

Gene Name	GUCY1B2
Alternative Names	GUCY1B2; Guanylate cyclase soluble subunit beta-2; GCS-beta-2
Gene ID	2974.0
SwissProt ID	O75343.The antiserum was produced against synthesized peptide derived from human GCS-beta-2. AA range:53-102

Application

Dilution Ratio	IHC 1:100-1:300 ELISA: 1:10000
Molecular Weight	70kD

Background

Nitric oxide-sensitive guanylyl cyclase is a heterodimeric enzyme consisting of an alpha and a beta subunit. The enzyme

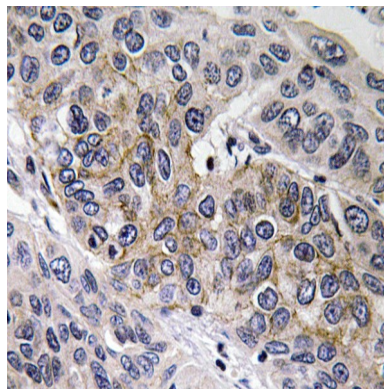
Product Name: GCS- β -2 Rabbit Polyclonal Antibody
Catalog #: APRab11376



converts GTP into the second messenger cGMP and plays a major role in the cardiovascular system as a receptor for nitric oxide. Unlike other guanylyl cyclases, GUCY1B2 contains an 86-amino acid C-terminal extension with a consensus sequence for isoprenylation/carboxymethylation.

Research Area

Image Data



Immunohistochemistry analysis of GCS- β -2 antibody in paraffin-embedded human lung carcinoma tissue.

Note

For research use only.