
Summary

Production Name	GCSc- γ Rabbit Polyclonal Antibody
Description	Rabbit Polyclonal Antibody
Host	Rabbit
Application	WB,ELISA
Reactivity	Human,Mouse,Rat

Performance

Conjugation	Unconjugated
Modification	Unmodified
Isotype	IgG
Clonality	Polyclonal
Form	Liquid
Storage	Store at 4°C short term. Aliquot and store at -20°C long term. Avoid freeze/thaw cycles.
Buffer	Liquid in PBS containing 50% glycerol, 0.5% BSA and 0.02% New type preservative N.
Purification	Affinity purification

Immunogen

Gene Name	GCLC
Alternative Names	GCLC; GLCL; GLCLC; Glutamate--cysteine ligase catalytic subunit; GCS heavy chain; Gamma-ECS; Gamma-glutamylcysteine synthetase
Gene ID	2729.0
SwissProt ID	P48506.The antiserum was produced against synthesized peptide derived from human GCSc-gamma. AA range:266-315

Application

Dilution Ratio	WB 1:500 - 1:2000. ELISA: 1:10000
Molecular Weight	73kD

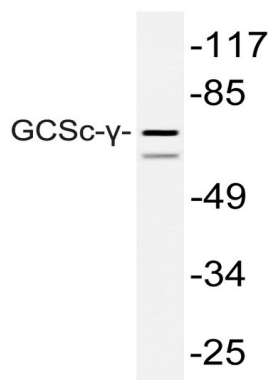
Background

Glutamate-cysteine ligase, also known as gamma-glutamylcysteine synthetase is the first rate-limiting enzyme of glutathione synthesis. The enzyme consists of two subunits, a heavy catalytic subunit and a light regulatory subunit. This locus encodes the catalytic subunit, while the regulatory subunit is derived from a different gene located on chromosome 1p22-p21. Mutations at this locus have been associated with hemolytic anemia due to deficiency of gamma-glutamylcysteine synthetase and susceptibility to myocardial infarction.[provided by RefSeq, Oct 2010],catalytic activity:ATP + L-glutamate + L-cysteine = ADP + phosphate + gamma-L-glutamyl-L-cysteine.,disease:Defects in GCLC are the cause of hemolytic anemia [MIM:230450].,enzyme regulation:Feedback inhibition by glutathione.,pathway:Sulfur metabolism; glutathione biosynthesis; glutathione from L-cysteine and L-glutamate: step 1/2.,similarity:Belongs to the glutamate--cysteine ligase type 3 family.,subunit:Heterodimer of a catalytic heavy chain and a regulatory light chain.,

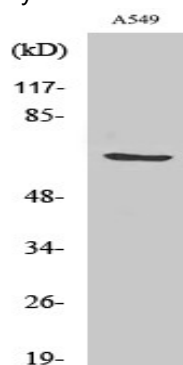
Research Area

Glutathione metabolism;

Image Data



Western blot analysis of lysate from A549 cells, using GCSc- γ antibody.



Western Blot analysis of various cells using GCSc- γ Polyclonal Antibody

Product Name: GCSc- γ Rabbit Polyclonal Antibody
Catalog #: APRab11369



Note

For research use only.