

Summary

Production Name	GCP5 Rabbit Polyclonal Antibody
Description	Rabbit Polyclonal Antibody
Host	Rabbit
Application	WB,IHC,ELISA
Reactivity	Human,Mouse,Rat

Performance

Conjugation	Unconjugated
Modification	Unmodified
Isotype	IgG
Clonality	Polyclonal
Form	Liquid
Storage	Store at 4°C short term. Aliquot and store at -20°C long term. Avoid freeze/thaw cycles.
Buffer	Liquid in PBS containing 50% glycerol, 0.5% BSA and 0.02% New type preservative N.
Purification	Affinity purification

Immunogen

Gene Name	TUBGCP5
Alternative Names	TUBGCP5; GCP5; KIAA1899; Gamma-tubulin complex component 5; GCP-5
Gene ID	114791.0
SwissProt ID	Q96RT8.The antiserum was produced against synthesized peptide derived from human TUBGCP5. AA range:741-790

Application

Dilution Ratio	WB 1:500 - 1:2000. IHC 1:100 - 1:300. ELISA: 1:20000..
Molecular Weight	118kD

Background

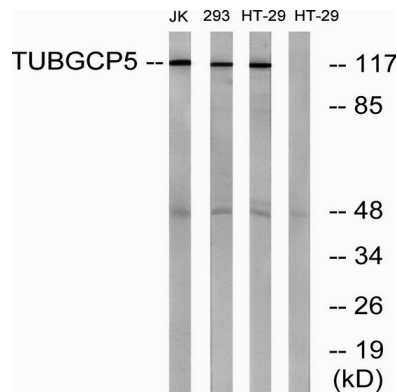
Product Name: GCP5 Rabbit Polyclonal Antibody
Catalog #: APRab11367



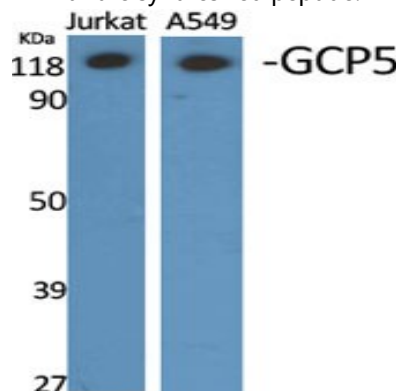
function:Gamma-tubulin complex is necessary for microtubule nucleation at the centrosome.,similarity:Belongs to the GCP family.,subunit:Gamma-tubulin complex is composed of gamma-tubulin, GCP2, GCP3, GCP4, GCP5 and GCP6.,tissue specificity:Widely expressed, with highest levels in heart and skeletal muscle and moderate levels in brain.,function:Gamma-tubulin complex is necessary for microtubule nucleation at the centrosome.,similarity:Belongs to the GCP family.,subunit:Gamma-tubulin complex is composed of gamma-tubulin, GCP2, GCP3, GCP4, GCP5 and GCP6.,tissue specificity:Widely expressed, with highest levels in heart and skeletal muscle and moderate levels in brain.,

Research Area

Image Data

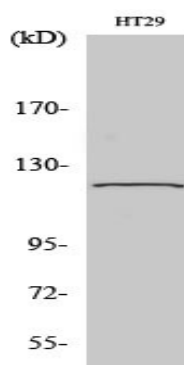


Western blot analysis of lysates from HT-29, Jurkat, and 293 cells, using TUBGCP5 Antibody. The lane on the right is blocked with the synthesized peptide.

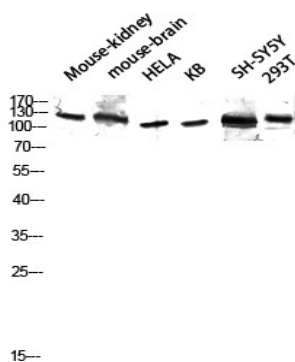


Western Blot analysis of various cells using GCP5 Polyclonal Antibody diluted at 1: 2000

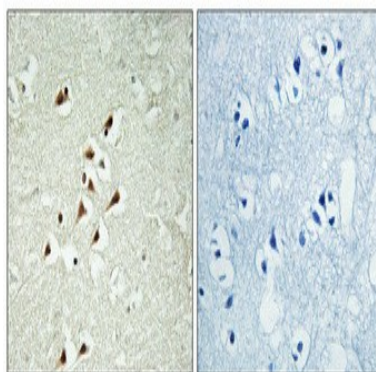
Product Name: GCP5 Rabbit Polyclonal Antibody
Catalog #: APRab11367



Western Blot analysis of 293 cells using GCP5 Polyclonal Antibody diluted at 1: 2000



Western blot analysis of Mouse-kidney mouse-brain HELA KB SH-SY5Y 293T lysis using GCP5 antibody. Antibody was diluted at 1:2000



Immunohistochemical analysis of paraffin-embedded Human brain. Antibody was diluted at 1:100 (4°, overnight) . High-pressure and temperature Tris-EDTA, pH8.0 was used for antigen retrieval. Negative control (right) obtained from antibody was pre-absorbed by immunogen peptide.

Note

For research use only.