

Summary

Production Name	GCP3 Rabbit Polyclonal Antibody
Description	Rabbit Polyclonal Antibody
Host	Rabbit
Application	IHC, WB, ELISA
Reactivity	Human, Mouse

Performance

Conjugation	Unconjugated
Modification	Unmodified
Isotype	IgG
Clonality	Polyclonal
Form	Liquid
Storage	Store at 4°C short term. Aliquot and store at -20°C long term. Avoid freeze/thaw cycles.
Buffer	Liquid in PBS containing 50% glycerol, 0.5% BSA and 0.02% New type preservative N.
Purification	Affinity purification

Immunogen

Gene Name	TUBGCP3
Alternative Names	TUBGCP3; GCP3; Gamma-tubulin complex component 3; GCP-3; hGCP3; Gamma-ring complex protein 104 kDa; h104p; hGrip104; Spindle pole body protein Spc98 homolog; hSpc98
Gene ID	10426.0
SwissProt ID	Q96CW5. The antiserum was produced against synthesized peptide derived from human TUBGCP3. AA range: 201-250

Application

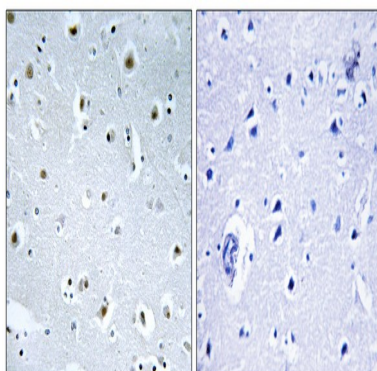
Dilution Ratio	WB 1:500 - 1:2000. IHC 1:100 - 1:300. ELISA: 1:20000..
Molecular Weight	105kD

Background

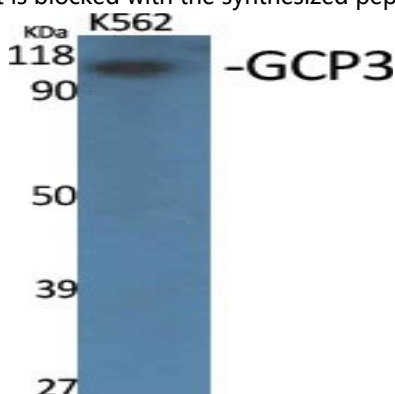
alternative products:Experimental confirmation may be lacking for some isoforms,function:Gamma-tubulin complex is necessary for microtubule nucleation at the centrosome.,similarity:Belongs to the GCP family.,subunit:Gamma-tubulin complex is composed of gamma-tubulin, GCP2, GCP3, GCP4, GCP5 and GCP6.,tissue specificity:Ubiquitously expressed.,alternative products:Experimental confirmation may be lacking for some isoforms,function:Gamma-tubulin complex is necessary for microtubule nucleation at the centrosome.,similarity:Belongs to the GCP family.,subunit:Gamma-tubulin complex is composed of gamma-tubulin, GCP2, GCP3, GCP4, GCP5 and GCP6.,tissue specificity:Ubiquitously expressed.,

Research Area

Image Data

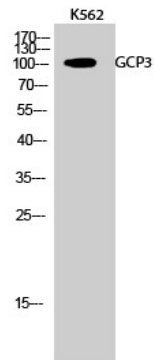


Immunohistochemistry analysis of paraffin-embedded human brain tissue, using TUBGCP3 Antibody. The picture on the right is blocked with the synthesized peptide.



Western Blot analysis of various cells using GCP3 Polyclonal Antibody

Product Name: GCP3 Rabbit Polyclonal Antibody
Catalog #: APRab11365



Western Blot analysis of K562 cells using GCP3 Polyclonal Antibody

Note

For research use only.