

Product Name: GCKR Rabbit Polyclonal Antibody
Catalog #: APRab11350



Summary

Production Name	GCKR Rabbit Polyclonal Antibody
Description	Rabbit Polyclonal Antibody
Host	Rabbit
Application	WB
Reactivity	Human,Mouse,Rat

Performance

Conjugation	Unconjugated
Modification	Unmodified
Isotype	IgG
Clonality	Polyclonal
Form	Liquid
Storage	Store at 4°C short term. Aliquot and store at -20°C long term. Avoid freeze/thaw cycles.
Buffer	Liquid in PBS containing 50% glycerol, 0.5% BSA and 0.02% New type preservative N.
Purification	Affinity purification

Immunogen

Gene Name	GCKR
Alternative Names	GCKR; Glucokinase regulatory protein; Glucokinase regulator
Gene ID	2646.0
SwissProt ID	Q14397.The antiserum was produced against synthesized peptide derived from human Glucokinase Regulator. AA range:211-260

Application

Dilution Ratio	WB 1:500-1:2000. ELISA: 1:40000.
Molecular Weight	68kD

Background

This gene encodes a protein belonging to the GCKR subfamily of the SIS (Sugar ISomerase) family of proteins. The gene

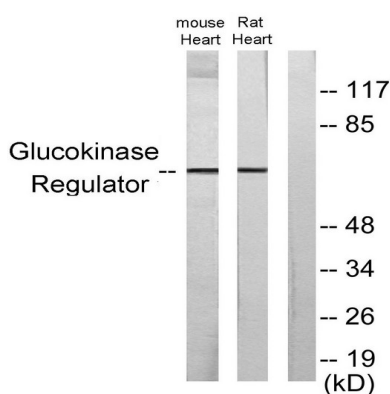
Product Name: GCKR Rabbit Polyclonal Antibody
Catalog #: APRab11350



product is a regulatory protein that inhibits glucokinase in liver and pancreatic islet cells by binding non-covalently to form an inactive complex with the enzyme. This gene is considered a susceptibility gene candidate for a form of maturity-onset diabetes of the young (MODY). [provided by RefSeq, Jul 2008],function:Inhibits glucokinase by forming an inactive complex with this enzyme.,similarity:Belongs to the GCKR family.,similarity:Contains 1 SIS domain.,tissue specificity:Found in liver and pancreas. Not detected in muscle, brain, heart, thymus, intestine, uterus, adipose tissue, kidney, adrenal, lung or spleen.,

Research Area

Image Data



Western blot analysis of lysates from mouse heart and rat heart cells, using Glucokinase Regulator Antibody. The lane on the right is blocked with the synthesized peptide.

Note

For research use only.