

Summary

| | |
|------------------------|---------------------------------|
| Production Name | GBP1 Rabbit Polyclonal Antibody |
| Description | Rabbit Polyclonal Antibody |
| Host | Rabbit |
| Application | WB,IF,ELISA |
| Reactivity | Human,Rat,Mouse |

Performance

| | |
|---------------------|--|
| Conjugation | Unconjugated |
| Modification | Unmodified |
| Isotype | IgG |
| Clonality | Polyclonal |
| Form | Liquid |
| Storage | Store at 4°C short term. Aliquot and store at -20°C long term. Avoid freeze/thaw cycles. |
| Buffer | Liquid in PBS containing 50% glycerol, 0.5% BSA and 0.02% New type preservative N. |
| Purification | Affinity purification |

Immunogen

| | |
|--------------------------|---|
| Gene Name | GBP1 |
| Alternative Names | GBP1; Interferon-induced guanylate-binding protein 1; GTP-binding protein 1; GBP-1; HuGBP-1; Guanine nucleotide-binding protein 1 |
| Gene ID | 2633.0 |
| SwissProt ID | P32455.The antiserum was produced against synthesized peptide derived from human GBP1. AA range:71-120 |

Application

| | |
|-------------------------|---|
| Dilution Ratio | WB 1:500 - 1:2000. IF 1:200 - 1:1000. ELISA: 1:40000. Not yet tested in other applications. |
| Molecular Weight | 68kD |

Product Name: GBP1 Rabbit Polyclonal Antibody
Catalog #: APRab11328

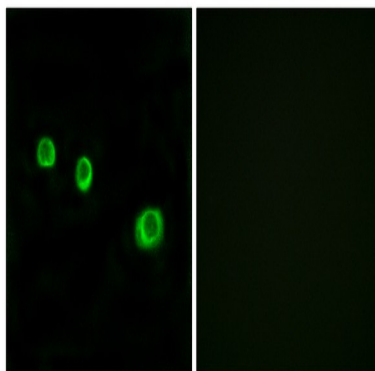


Background

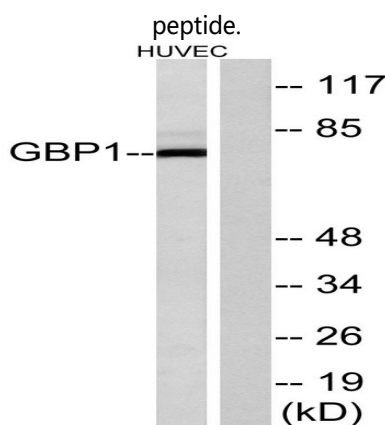
Guanylate binding protein expression is induced by interferon. Guanylate binding proteins are characterized by their ability to specifically bind guanine nucleotides (GMP, GDP, and GTP) and are distinguished from the GTP-binding proteins by the presence of 2 binding motifs rather than 3. [provided by RefSeq, Jul 2008],function: Binds GTP, GDP and GMP.,induction: By interferon gamma during macrophage activation.,similarity: Belongs to the GBP family.,

Research Area

Image Data



Immunofluorescence analysis of MCF7 cells, using GBP1 Antibody. The picture on the right is blocked with the synthesized



Western blot analysis of lysates from HUVEC cells, using GBP1 Antibody. The lane on the right is blocked with the synthesized peptide.

Note

For research use only.