

Summary

Production Name	GBDR1 Rabbit Polyclonal Antibody
Description	Rabbit Polyclonal Antibody
Host	Rabbit
Application	WB,ELISA
Reactivity	Human,Rat,Mouse

Performance

Conjugation	Unconjugated
Modification	Unmodified
Isotype	IgG
Clonality	Polyclonal
Form	Liquid
Storage	Store at 4°C short term. Aliquot and store at -20°C long term. Avoid freeze/thaw cycles.
Buffer	Liquid in PBS containing 50% glycerol, 0.5% BSA and 0.02% New type preservative N.
Purification	Affinity purification

Immunogen

Gene Name	UBAC1 UBAC1; GBDR1; KPC2; UBADC1; Ubiquitin-associated domain-containing protein 1;
Alternative Names	UBA domain-containing protein 1; E3 ubiquitin-protein ligase subunit KPC2; Glioblastoma cell differentiation-related protein 1; Kip1 ubiquitination-promoting com
Gene ID	10422.0
SwissProt ID	Q9BSL1.The antiserum was produced against synthesized peptide derived from human UBAC1. AA range:91-140

Application

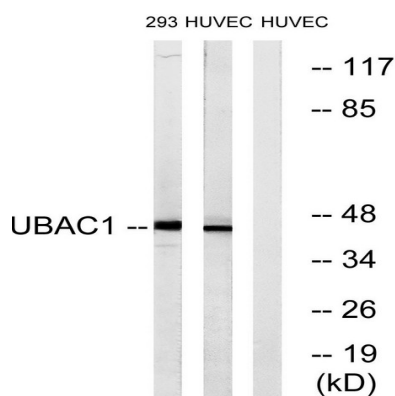
Dilution Ratio	WB 1:500 - 1:2000. ELISA: 1:10000..
Molecular Weight	45kD

Background

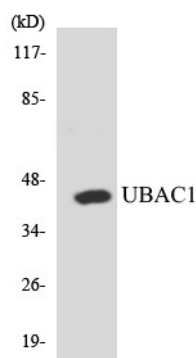
function:Non-catalytic subunit of the KPC complex that acts as E3 ubiquitin-protein ligase. Required for poly-ubiquitination and proteasome-mediated degradation of CDKN1B during G1 phase of the cell cycle.,pathway:Protein modification; protein ubiquitination.,similarity:Contains 1 STI1 domain.,similarity:Contains 1 ubiquitin-like domain.,similarity:Contains 2 UBA domains.,subunit:Component of the KPC complex composed of RNF123/KPC1 and UBAC1/KPC2. Interacts with RNF123 via its N-terminal domain. Interacts with the proteasome via its N-terminal domain.,tissue specificity:Ubiquitous.,function:Non-catalytic subunit of the KPC complex that acts as E3 ubiquitin-protein ligase. Required for poly-ubiquitination and proteasome-mediated degradation of CDKN1B during G1 phase of the cell cycle.,pathway:Protein modification; protein ubiquitination.,similarity:Contains 1 STI1 domain.,similarity:Contains 1 ubiquitin-like domain.,similarity:Contains 2 UBA domains.,subunit:Component of the KPC complex composed of RNF123/KPC1 and UBAC1/KPC2. Interacts with RNF123 via its N-terminal domain. Interacts with the proteasome via its N-terminal domain.,tissue specificity:Ubiquitous.,

Research Area

Image Data



Western blot analysis of lysates from 293 and HUVEC cells, using UBAC1 Antibody. The lane on the right is blocked with the synthesized peptide.



Product Name: GBDR1 Rabbit Polyclonal Antibody
Catalog #: APRab11324



Western blot analysis of the lysates from HT-29 cells using UBAC1 antibody.



Western Blot analysis of various cells using GBDR1 Polyclonal Antibody diluted at 1: 500

Note

For research use only.