
Summary

Production Name	GATA-6 Rabbit Polyclonal Antibody
Description	Rabbit Polyclonal Antibody
Host	Rabbit
Application	WB,ELISA
Reactivity	Human,Mouse,Rat

Performance

Conjugation	Unconjugated
Modification	Unmodified
Isotype	IgG
Clonality	Polyclonal
Form	Liquid
Storage	Store at 4°C short term. Aliquot and store at -20°C long term. Avoid freeze/thaw cycles.
Buffer	Liquid in PBS containing 50% glycerol, 0.5% BSA and 0.02% New type preservative N.
Purification	Affinity purification

Immunogen

Gene Name	GATA6
Alternative Names	GATA6; Transcription factor GATA-6; GATA-binding factor 6
Gene ID	2627.0
SwissProt ID	Q92908.The antiserum was produced against synthesized peptide derived from human GATA6. AA range:461-510

Application

Dilution Ratio	WB 1:500 - 1:2000. ELISA: 1:10000
Molecular Weight	45kD

Background

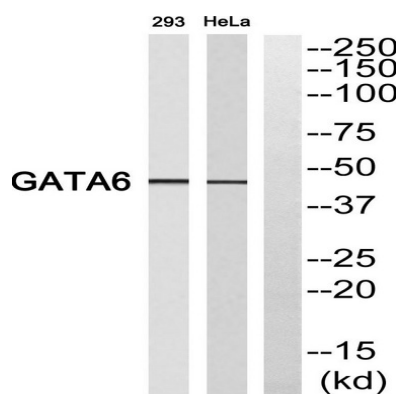
Product Name: GATA-6 Rabbit Polyclonal Antibody
Catalog #: APRab11316



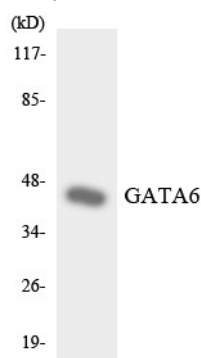
This gene is a member of a small family of zinc finger transcription factors that play an important role in the regulation of cellular differentiation and organogenesis during vertebrate development. This gene is expressed during early embryogenesis and localizes to endo- and mesodermally derived cells during later embryogenesis and thereby plays an important role in gut, lung, and heart development. Mutations in this gene are associated with several congenital defects. [provided by RefSeq, Mar 2012],function:Thought to be important for regulating terminal differentiation and/or proliferation.,similarity:Contains 2 GATA-type zinc fingers.,tissue specificity:Expressed in heart, gut and gut-derived tissues.,

Research Area

Image Data



Western blot analysis of GATA6 Antibody. The lane on the right is blocked with the GATA6 peptide.



Western blot analysis of the lysates from HepG2 cells using GATA6 antibody.

Note

For research use only.