

**Product Name: GASP-1 Rabbit Polyclonal Antibody**  
**Catalog #: APRab11305**



## Summary

<b>Production Name</b>	GASP-1 Rabbit Polyclonal Antibody
<b>Description</b>	Rabbit Polyclonal Antibody
<b>Host</b>	Rabbit
<b>Application</b>	IF,ELISA
<b>Reactivity</b>	Human,Rat,Mouse

## Performance

<b>Conjugation</b>	Unconjugated
<b>Modification</b>	Unmodified
<b>Isotype</b>	IgG
<b>Clonality</b>	Polyclonal
<b>Form</b>	Liquid
<b>Storage</b>	Store at 4°C short term. Aliquot and store at -20°C long term. Avoid freeze/thaw cycles.
<b>Buffer</b>	Liquid in PBS containing 50% glycerol, 0.5% BSA and 0.02% New type preservative N.
<b>Purification</b>	Affinity purification

## Immunogen

<b>Gene Name</b>	GPRASP1
<b>Alternative Names</b>	GPRASP1; GASP; KIAA0443; G-protein coupled receptor-associated sorting protein 1; GASP-1
<b>Gene ID</b>	9737.0
<b>SwissProt ID</b>	Q5JY77.The antiserum was produced against synthesized peptide derived from human GASP1. AA range:741-790

## Application

<b>Dilution Ratio</b>	IF 1:200-1:1000. ELISA: 1:10000.
<b>Molecular Weight</b>	

## Background

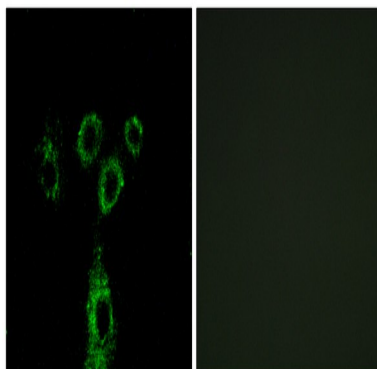
**Product Name: GASP-1 Rabbit Polyclonal Antibody**  
**Catalog #: APRab11305**



This gene encodes a member of the GPRASP (G protein-coupled receptor associated sorting protein) family. The protein may modulate lysosomal sorting and functional down-regulation of a variety of G-protein coupled receptors. It targets receptors for degradation in lysosomes. The receptors interacting with this sorting protein include D2 dopamine receptor (DRD2), delta opioid receptor (OPRD1), beta-2 adrenergic receptor (ADRB2), D4 dopamine receptor (DRD4) and cannabinoid 1 receptor (CB1R). Multiple alternatively spliced transcript variants encoding the same protein have been identified. [provided by RefSeq, May 2010],function:May modulate lysosomal sorting and functional down-regulation of a variety of G-protein coupled receptors. Targets receptors for degradation in lysosomes.,similarity:Belongs to the GPRASP family.,subunit:Interacts with cytoplasmic tails of a variety of G-protein coupled receptors such as D2 dopamine receptor/DRD2 (By similarity), delta opioid receptor/OPRD1, beta-2 adrenergic receptor/ADRB2 and D4 dopamine receptor/DRD4. Interacts with PER1.,tissue specificity:Expressed in the brain, with lower expression in medulla, spinal cord and substantia nigra.,

## Research Area

## Image Data



Immunofluorescence analysis of A549 cells, using GASP1 Antibody. The picture on the right is blocked with the synthesized peptide.

## Note

For research use only.