
Summary

Production Name	Gasdermin C Rabbit Polyclonal Antibody
Description	Rabbit Polyclonal Antibody
Host	Rabbit
Application	WB,ELISA
Reactivity	Human,Rat,Mouse

Performance

Conjugation	Unconjugated
Modification	Unmodified
Isotype	IgG
Clonality	Polyclonal
Form	Liquid
Storage	Store at 4°C short term. Aliquot and store at -20°C long term. Avoid freeze/thaw cycles.
Buffer	Liquid in PBS containing 50% glycerol, 0.5% BSA and 0.02% New type preservative N.
Purification	Affinity purification

Immunogen

Gene Name	GSDMC
Alternative Names	GSDMC; MLZE; Gasdermin-C; Melanoma-derived leucine zipper-containing extranuclear factor
Gene ID	56169.0
SwissProt ID	Q9BYG8.The antiserum was produced against synthesized peptide derived from human GSDMC. AA range:109-158

Application

Dilution Ratio	WB 1:500-2000 ELISA 1:5000-20000 Not yet tested in other applications.
Molecular Weight	55kD

Product Name: Gasdermin C Rabbit Polyclonal Antibody
Catalog #: APRab11304

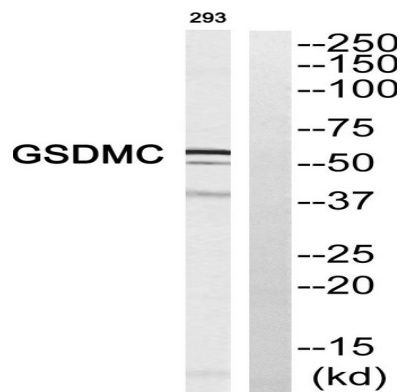


Background

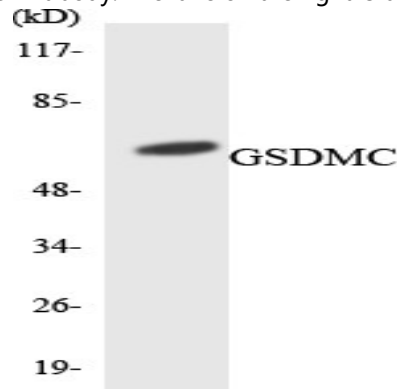
caution:Despite its name, it is unclear if this protein contains a functional leucine zipper.,similarity:Belongs to the gasdermin family.,tissue specificity:Expressed primarily in trachea and spleen.,caution:Despite its name, it is unclear if this protein contains a functional leucine zipper.,similarity:Belongs to the gasdermin family.,tissue specificity:Expressed primarily in trachea and spleen.,

Research Area

Image Data

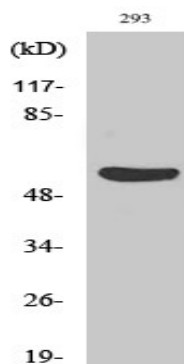


Western blot analysis of GSDMC Antibody. The lane on the right is blocked with the GSDMC peptide.



Western blot analysis of the lysates from HepG2 cells using GSDMC antibody.

Product Name: Gasdermin C Rabbit Polyclonal Antibody
Catalog #: APRab11304



Western Blot analysis of various cells using Gasdermin C Polyclonal Antibody diluted at 1: 500

Note

For research use only.