

Summary

Production Name	GALK1 Rabbit Polyclonal Antibody
Description	Rabbit Polyclonal Antibody
Host	Rabbit
Application	WB,ELISA
Reactivity	Human,Mouse,Rat

Performance

Conjugation	Unconjugated
Modification	Unmodified
Isotype	IgG
Clonality	Polyclonal
Form	Liquid
Storage	Store at 4°C short term. Aliquot and store at -20°C long term. Avoid freeze/thaw cycles.
Buffer	Liquid in PBS containing 50% glycerol, 0.5% BSA and 0.02% New type preservative N.
Purification	Affinity purification

Immunogen

Gene Name	GALK1
Alternative Names	GALK1; GALK; Galactokinase; Galactose kinase
Gene ID	2584.0
SwissProt ID	P51570.The antiserum was produced against synthesized peptide derived from human GALK1. AA range:1-50

Application

Dilution Ratio	WB 1:500 - 1:2000. ELISA: 1:10000
Molecular Weight	45kD

Background

Product Name: GALK1 Rabbit Polyclonal Antibody
Catalog #: APRab11279

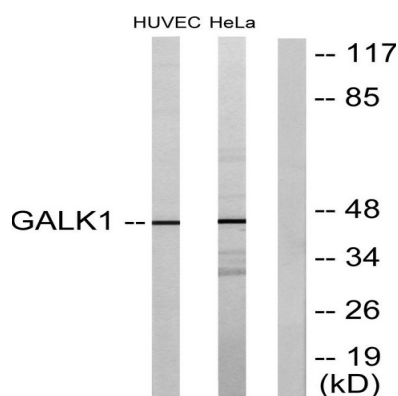


Galactokinase is a major enzyme for the metabolism of galactose and its deficiency causes congenital cataracts during infancy and presenile cataracts in the adult population. [provided by RefSeq, Jul 2008],catalytic activity:ATP + D-galactose = ADP + alpha-D-galactose 1-phosphate.,disease:Defects in GALK1 are the cause of galactosemia II [MIM:230200]. It is an autosomal recessive deficiency characterized by congenital cataracts during infancy and presenile cataracts in the adult population. The cataracts are secondary to accumulation of galactitol in the lenses.,function:Major enzyme for galactose metabolism.,pathway:Carbohydrate metabolism; galactose metabolism.,similarity:Belongs to the GHMP kinase family.,similarity:Belongs to the GHMP kinase family. Galk subfamily.,

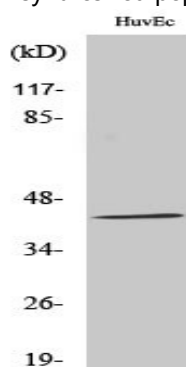
Research Area

Galactose metabolism;Amino sugar and nucleotide sugar metabolism;

Image Data



Western blot analysis of lysates from HUVEC and HeLa cells, using GALK1 Antibody. The lane on the right is blocked with the synthesized peptide.



Western Blot analysis of various cells using GALK1 Polyclonal Antibody diluted at 1: 1000

Note

For research use only.