

Summary

Production Name	Galectin-7 Rabbit Polyclonal Antibody
Description	Rabbit Polyclonal Antibody
Host	Rabbit
Application	WB
Reactivity	Human,Mouse,Rat

Performance

Conjugation	Unconjugated
Modification	Unmodified
Isotype	IgG
Clonality	Polyclonal
Form	Liquid
Storage	Store at 4°C short term. Aliquot and store at -20°C long term. Avoid freeze/thaw cycles.
Buffer	Liquid in PBS containing 50% glycerol, 0.5% BSA and 0.02% New type preservative N.
Purification	Affinity purification

Immunogen

Gene Name	LGALS7
Alternative Names	LGALS7; PIG1; LGALS7B; Galectin-7; Gal-7; HKL-14; PI7; p53-induced gene 1 protein
Gene ID	3963/653499
SwissProt ID	P47929.The antiserum was produced against synthesized peptide derived from human LEG7. AA range:41-90

Application

Dilution Ratio	WB 1:500-2000 ELISA: 1:5000.
Molecular Weight	160kD

Background

The galectins are a family of beta-galactoside-binding proteins implicated in modulating cell-cell and cell-matrix

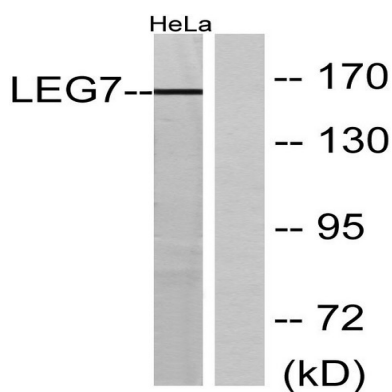
Product Name: Galectin-7 Rabbit Polyclonal Antibody
Catalog #: APRab11275



interactions. Differential and in situ hybridization studies indicate that this lectin is specifically expressed in keratinocytes and found mainly in stratified squamous epithelium. A duplicate copy of this gene (GeneID:653499) is found adjacent to, but on the opposite strand on chromosome 19. [provided by RefSeq, Jul 2008],function:Could be involved in cell-cell and/or cell-matrix interactions necessary for normal growth control. Pro-apoptotic protein that functions intracellularly upstream of JNK activation and cytochrome c release.,induction:By p53.,online information:Galectin-7,similarity:Contains 1 galectin domain.,subcellular location:May be secreted by a non-classical secretory pathway.,subunit:Monomer.,tissue specificity:Mainly in stratified squamous epithelium.,

Research Area

Image Data



Western blot analysis of lysates from HeLa cells, using LEG7 Antibody. The lane on the right is blocked with the synthesized peptide.

Note

For research use only.