

## Summary

<b>Production Name</b>	Galectin-4 Rabbit Polyclonal Antibody
<b>Description</b>	Rabbit Polyclonal Antibody
<b>Host</b>	Rabbit
<b>Application</b>	IHC, WB, ELISA
<b>Reactivity</b>	Human, Rat, Mouse

## Performance

<b>Conjugation</b>	Unconjugated
<b>Modification</b>	Unmodified
<b>Isotype</b>	IgG
<b>Clonality</b>	Polyclonal
<b>Form</b>	Liquid
<b>Storage</b>	Store at 4°C short term. Aliquot and store at -20°C long term. Avoid freeze/thaw cycles.
<b>Buffer</b>	Liquid in PBS containing 50% glycerol, 0.5% BSA and 0.02% New type preservative N.
<b>Purification</b>	Affinity purification

## Immunogen

<b>Gene Name</b>	LGALS4
<b>Alternative Names</b>	LGALS4; Galectin-4; Gal-4; Antigen NY-CO-27; L-36 lactose-binding protein; L36LBP; Lactose-binding lectin 4
<b>Gene ID</b>	3960.0
<b>SwissProt ID</b>	P56470. The antiserum was produced against synthesized peptide derived from human LEG4. AA range:61-110

## Application

<b>Dilution Ratio</b>	WB 1:500 - 1:2000. IHC 1:100 - 1:300. ELISA: 1:20000..
<b>Molecular Weight</b>	36kD

**Product Name: Galectin-4 Rabbit Polyclonal Antibody**  
**Catalog #: APRab11274**

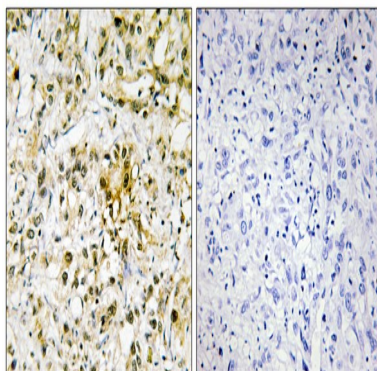


## Background

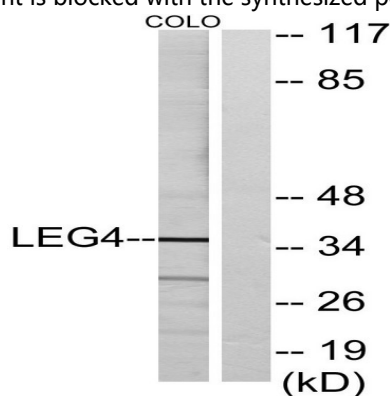
The galectins are a family of beta-galactoside-binding proteins implicated in modulating cell-cell and cell-matrix interactions. The expression of this gene is restricted to small intestine, colon, and rectum, and it is underexpressed in colorectal cancer. [provided by RefSeq, Jul 2008],domain:Contains two homologous but distinct carbohydrate-binding domains.,function:Galectin that binds lactose and a related range of sugars. May be involved in the assembly of adherens junctions.,online information:Galectin-4,similarity:Contains 2 galectin domains.,subunit:Monomer.,

## Research Area

## Image Data

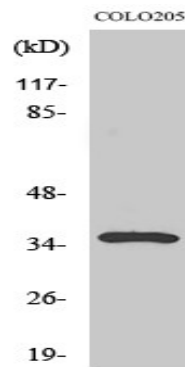


Immunohistochemistry analysis of paraffin-embedded human liver carcinoma tissue, using LEG4 Antibody. The picture on the right is blocked with the synthesized peptide.



Western blot analysis of lysates from COLO cells, using LEG4 Antibody. The lane on the right is blocked with the synthesized peptide.

**Product Name: Galectin-4 Rabbit Polyclonal Antibody**  
**Catalog #: APRab11274**



Western Blot analysis of various cells using Galectin-4 Polyclonal Antibody

**Note**

For research use only.