

Summary

Production Name	Galectin-2 Rabbit Polyclonal Antibody
Description	Rabbit Polyclonal Antibody
Host	Rabbit
Application	IF,ELISA
Reactivity	Human,Mouse,Rat

Performance

Conjugation	Unconjugated
Modification	Unmodified
Isotype	IgG
Clonality	Polyclonal
Form	Liquid
Storage	Store at 4°C short term. Aliquot and store at -20°C long term. Avoid freeze/thaw cycles.
Buffer	Liquid in PBS containing 50% glycerol, 0.5% BSA and 0.02% New type preservative N.
Purification	Affinity purification

Immunogen

Gene Name	LGALS2
Alternative Names	LGALS2; Galectin-2; Gal-2; Beta-galactoside-binding lectin L-14-II; HL14; Lactose-binding lectin 2; S-Lac lectin 2
Gene ID	3957.0
SwissProt ID	P05162.The antiserum was produced against synthesized peptide derived from human LEG2. AA range:31-80

Application

Dilution Ratio	IF 1:200-1:1000. ELISA: 1:5000.
Molecular Weight	

Background

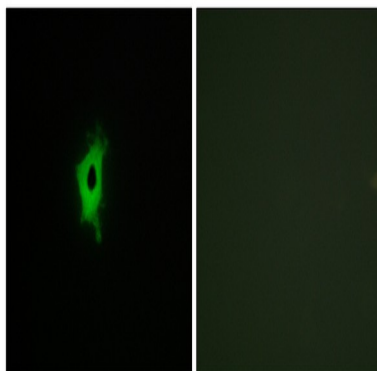
Product Name: Galectin-2 Rabbit Polyclonal Antibody
Catalog #: APRab11272



The protein encoded by this gene is a soluble beta-galactoside binding lectin. The encoded protein is found as a homodimer and can bind to lymphotoxin-alpha. A single nucleotide polymorphism in an intron of this gene can alter the transcriptional level of the protein, with a resultant increased risk of myocardial infarction. [provided by RefSeq, Jul 2008],function:This protein binds beta-galactoside. Its physiological function is not yet known.,online information:Galectin-2,similarity:Contains 1 galectin domain.,subunit:Homodimer.,

Research Area

Image Data



Immunofluorescence analysis of COS7 cells, using LEG2 Antibody. The picture on the right is blocked with the synthesized peptide.

Note

For research use only.