

## Summary

<b>Production Name</b>	GADL1 Rabbit Polyclonal Antibody
<b>Description</b>	Rabbit Polyclonal Antibody
<b>Host</b>	Rabbit
<b>Application</b>	WB
<b>Reactivity</b>	Human,Mouse

## Performance

<b>Conjugation</b>	Unconjugated
<b>Modification</b>	Unmodified
<b>Isotype</b>	IgG
<b>Clonality</b>	Polyclonal
<b>Form</b>	Liquid
<b>Storage</b>	Store at 4°C short term. Aliquot and store at -20°C long term. Avoid freeze/thaw cycles.
<b>Buffer</b>	Liquid in PBS containing 50% glycerol, and 0.02% New type preservative N.
<b>Purification</b>	Affinity purification

## Immunogen

<b>Gene Name</b>	GADL1
<b>Alternative Names</b>	Glutamate decarboxylase-like protein 1 (EC 4.1.1.-)
<b>Gene ID</b>	339896.0
<b>SwissProt ID</b>	Q6ZQY3.

## Application

<b>Dilution Ratio</b>	WB 1:500-2000 IHC 1:50-200
<b>Molecular Weight</b>	57kD

## Background

May catalyze the decarboxylation of L-aspartate, 3-sulfino-L-alanine (cysteine sulfinic acid), and L-cysteate to beta-alanine, hypotaurine and taurine, respectively. Does not exhibit any decarboxylation activity toward glutamate.

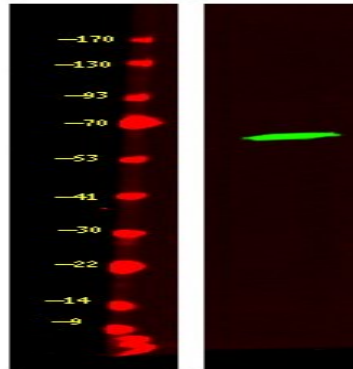
**Product Name: GADL1 Rabbit Polyclonal Antibody**  
**Catalog #: APRab11252**



---

## Research Area

## Image Data



Western Blot analysis of HeLa cell lysis, using primary antibody at 1:1000 dilution.

## Note

For research use only.